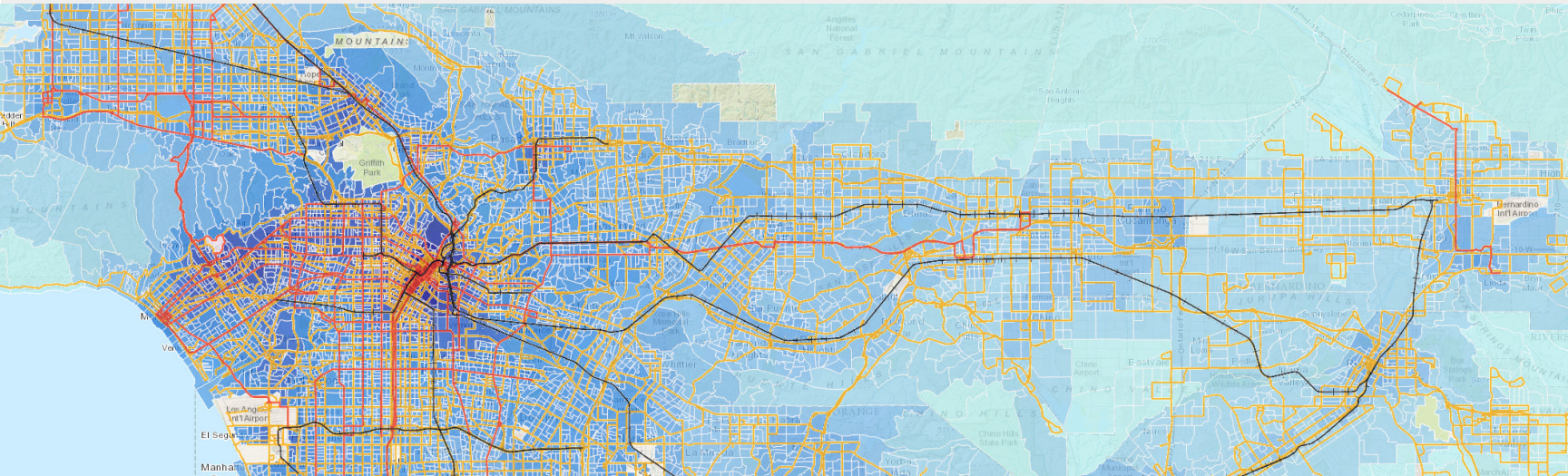


**REVISION** is a regional mapping and analysis application that integrates a range of public and private data for trend visualization and sustainable communities planning. The cloud-based application creates an easy-to-use regional performance monitoring tool for anyone with a modern web browser.



## Map Tool

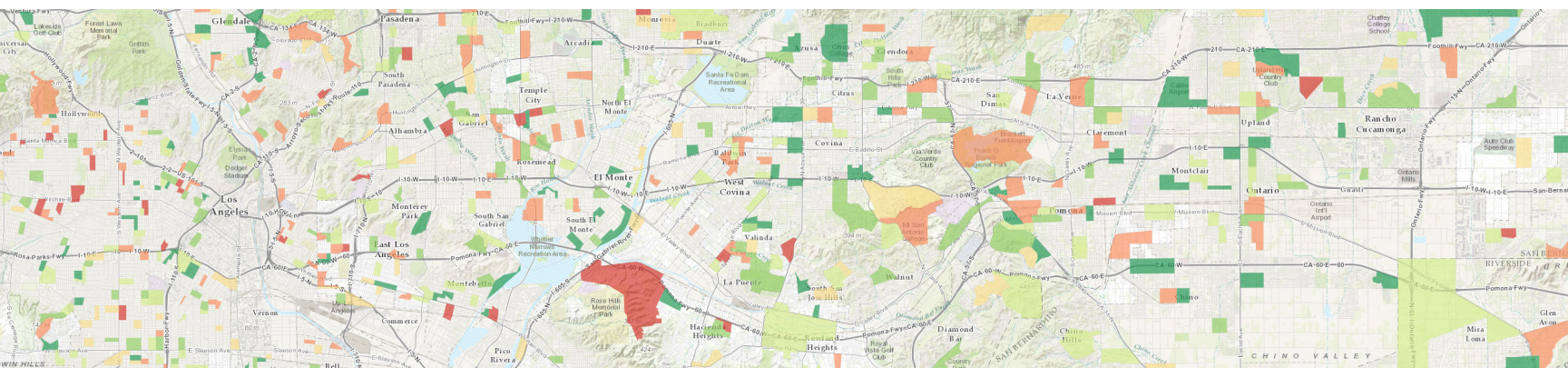
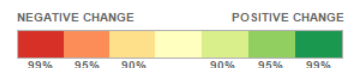
Where in Southern California is rent increasing the fastest? Where do people have the longest commutes? Do disadvantaged communities have less access to healthy foods?

**REVISION's** map visualizes regional planning data for transportation, housing, public health, and the environment to show differences between neighborhoods and between counties.

## Trends Tool

How are key livability and sustainability indicators changing over time? Are more people in a neighborhood using public transportation to commute? Are more of a neighborhood's residents employed now than a few years ago?

**REVISION** uses cloud computing to calculate the statistical significance of trends for over 10,000 distinct areas, even for overlapping time periods from the U.S. Census Bureau's American Community Survey.



REVISION has a unique report for each census block group and parcel in the region. Reports aggregate data from multiple sources to present in-depth metrics on livability, sustainability, demographics, housing, economics, and mobility. Each web-based report is sharable via a link.

### Area Report

- View livability and sustainability metrics
- Download beautiful charts for documents and presentations and print reports for quick neighborhood intelligence
- Graphical comparisons with the county differentiate individual neighborhoods

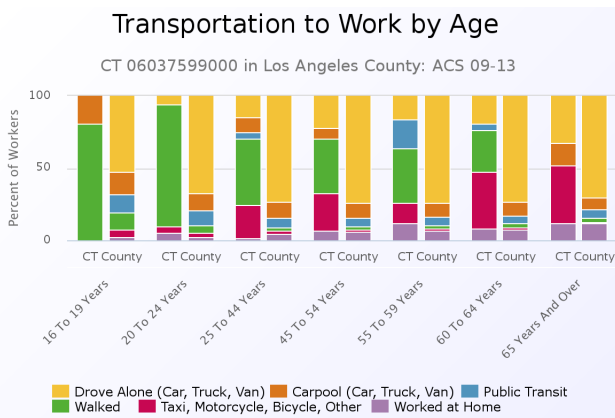
### Property Report

- Easy access to assessor's property information, including building square footage
- A crowd-sourced parking space inventory for every parcel, with estimates for Los Angeles
- Integrated Google Maps Street View for a recent, on-the ground look at the property

**41**  
Bike and Pedestrian Collisions 2003-2011 (SWITRS)

**6**  
Annual GHG per Household Tonnes (Auto Use)

**11.1**  
Modified Retail Food Environment Index (mRFEI)



### Building Characteristics



**Building Area**  
1,435 SQFT

**Year Built**  
1923

**Number of Buildings**  
0

**Number of Stories**  
2

## Metrics and Data Available on REVISION

### Demographics

- Age
- Race and Ethnicity
- Diversity
- Educational Attainment

### Planning Data

- Current & Planned High-Quality Transit Areas
- Transit Priority Areas
- Current & Planned Bike Network
- Public Transit Network
- Current Land Uses
- Building Density
- General Plan (Future Uses)
- Integrated Employment & Housing Growth Forecast
- Parking Space Inventory

### Livability

- Access to Healthy Food
- Disadvantaged Communities (CalEnviroScreen)
- Pollution Burdens Indicators
- Vulnerable Population Indicators
- Pedestrian and Bicycle Collisions
- Open Space

### Housing

- Rental Housing Price Index (Zillow)
- Owner Housing Price Index (Zillow)
- Housing + Transportation Affordability
- Federally-Insured Mortgage Data
- Unit Occupancy Status
- Owner- vs. Renter-Occupied
- Housing Unit Crowding
- Assessor Data

### Economics & Employment

- Household Income Distribution
- Median Household Income
- Employment Status
- Job Density
- Employment Sector

### Mobility & Accessibility

- Pedestrian Accessibility (WalkScore.com)
- Regional Locational Efficiency
- Employment Access Index
- Commute Mode
- Median Commute Distance
- Average Commute Time
- Vehicles Available by Own vs. Rent
- Auto-Use GHG Per-Household
- Bicycle Volumes