



SOUTHERN CALIFORNIA ASSOCIATION of GOVERNMENTS

# What Have We Learned and Where are We Going?

Presented at the UCLA Land Use,  
Transportation, and Environment Symposium

Hasan Ikhata  
Executive Director

October 19, 2010

# Regional Transportation Plan – A Vehicle to Address Challenges

2008 RTP = \$531.5 billion

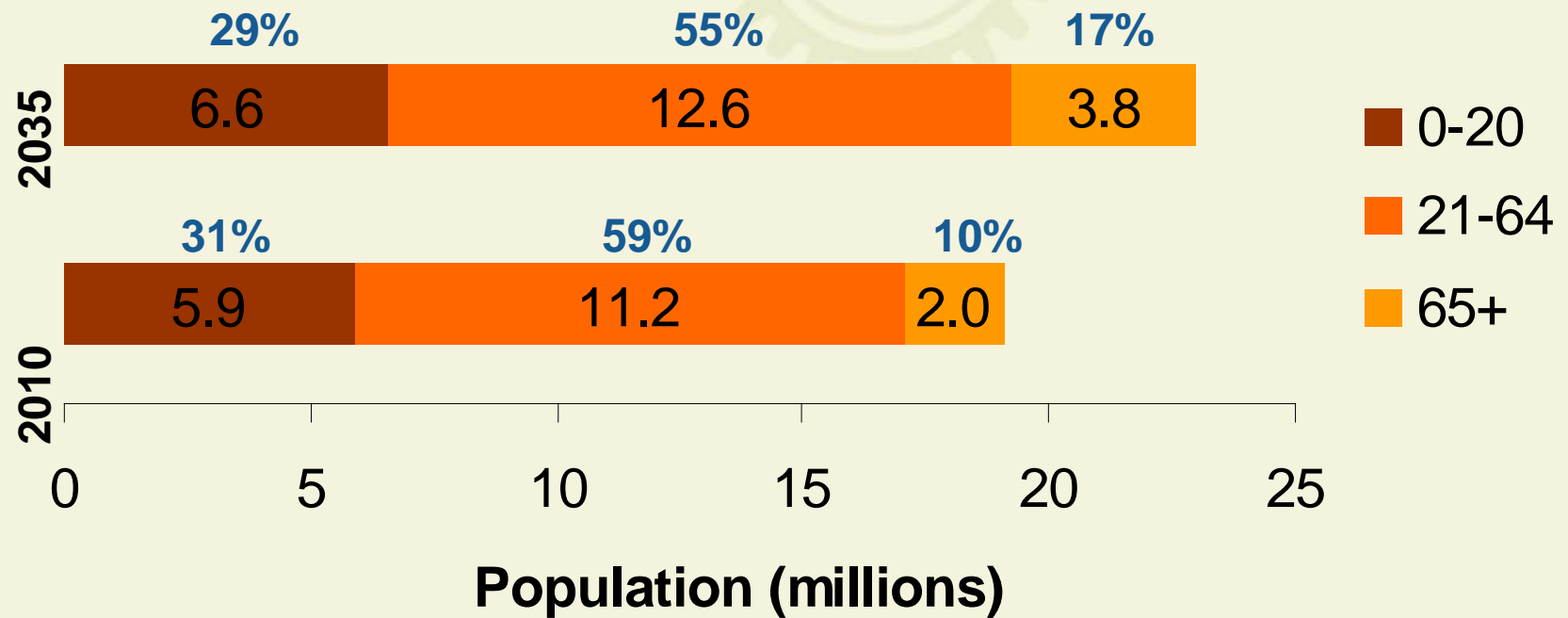
(nominal dollars)

2012 RTP to be  
determined



# Shift in Ages of the Population: SCAG Region

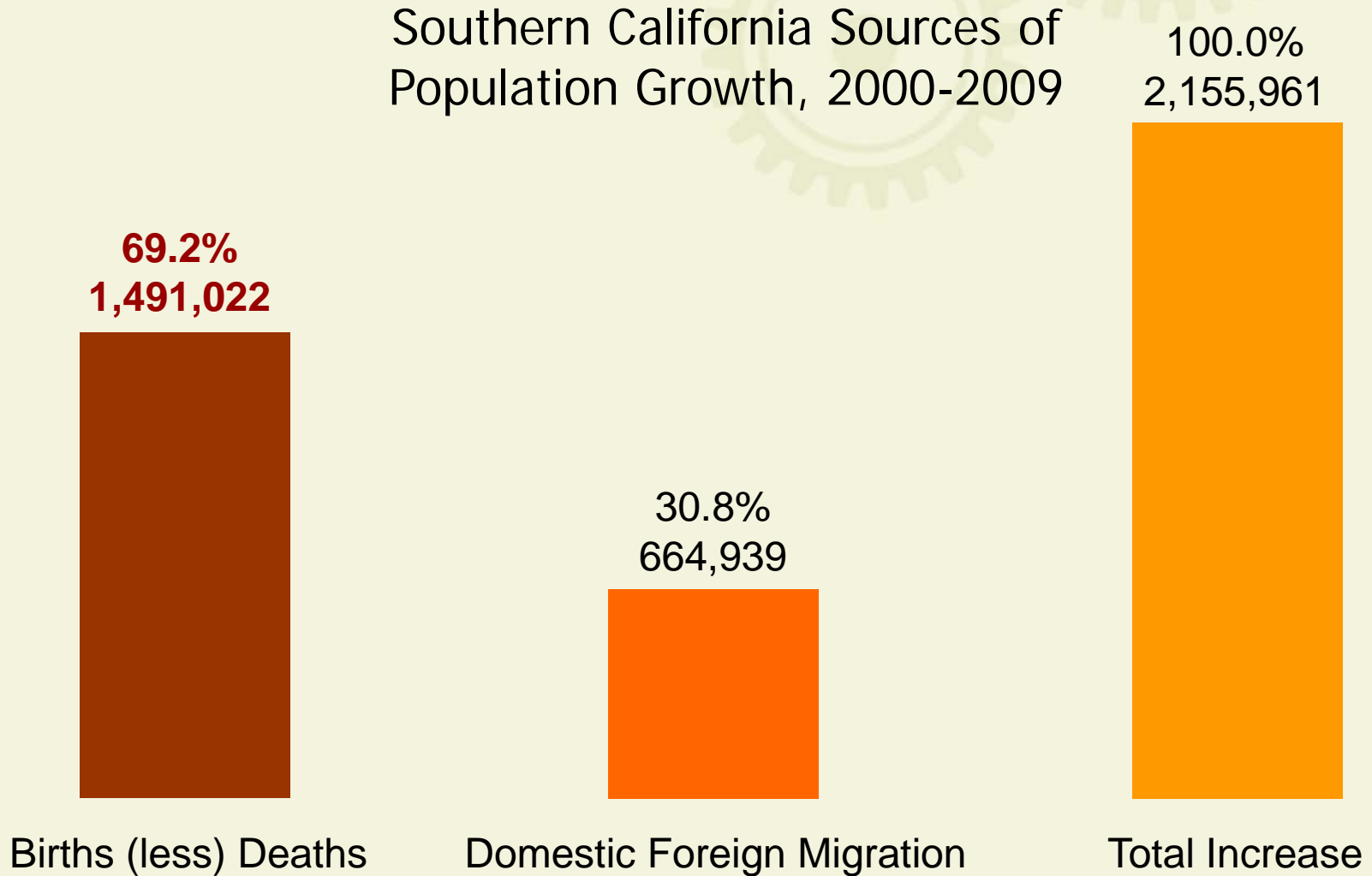
## Population By Age Group



Note: Percentages do not add to 100% due to rounding

Source: SCAG, Local Input/General Plan Growth Forecast, March 2010

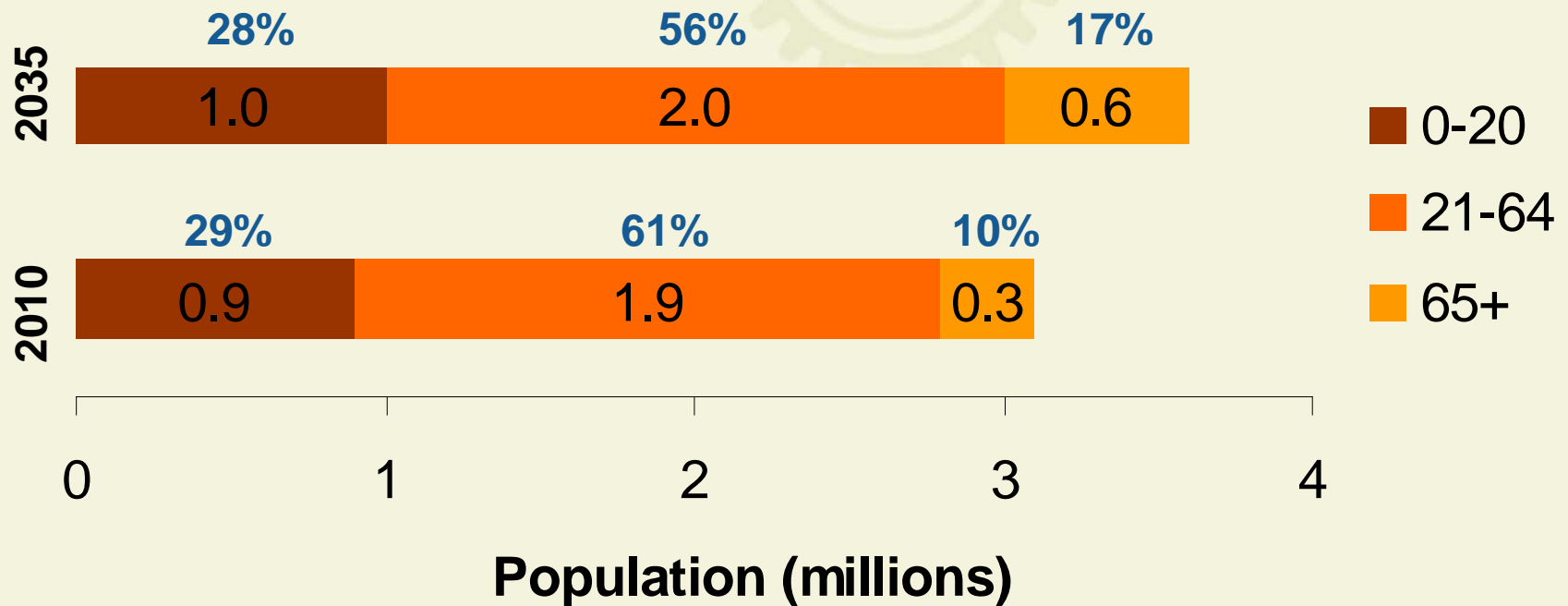
# Where is Population Growth Coming From?



Source: State of California, Department of Finance, County Population Estimates and Components of Change by Year

# Shift in Ages of the Population: Orange County

## Population By Age Group



Note: Percentages do not add to 100% due to rounding

Source: SCAG, Local Input/General Plan Growth Forecast, March 2010

# Demographic Trends

<b>Household Type</b>	<b>1960</b>	<b>2005</b>	<b>2040</b>
<b>HH with Children</b>	<b>48%</b>	32%	<b>26%</b>
<b>HH without Children</b>	52%	68%	74%
<b>Single-person HH</b>	13%	31%	34%

Source: Dr. Arthur C. Nelson, Presidential Professor & Director of Metropolitan Research, University of Utah.



# Market Trends

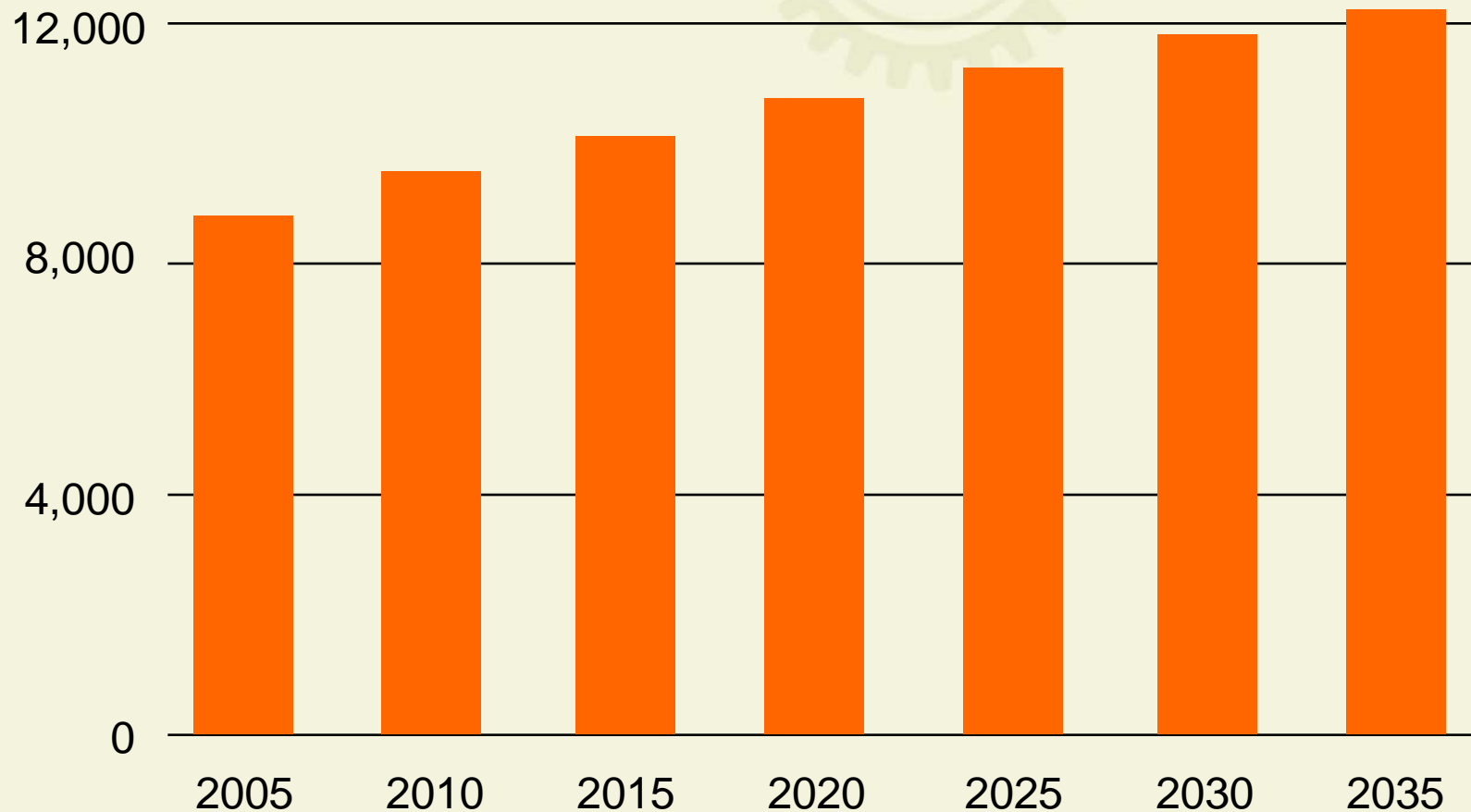
Unit Type	National Preference		Existing
	Total	Share	SCAG Region
<b>Attached</b>		38%	<b>42%</b>
Apartments	14%	37%	
Condos, Coops	9%*	24%	
Townhouses	15%	39%	
<b>Detached</b>		62%	<b>58%</b>
Small Lot (<7,000 sf)	37%	60%	
Large Lot (>7,000 sf)	25%	40%	

Sources: National housing preference based on a low range of surveys reviewed by Arthur C. Nelson "Leadership in a New Era," *Journal of the American Planning Association*, Fall 2006; existing per California Department of Finance, 2009

\*Toll Brothers shifting product mix to 15% condominium; WSJ 12/06

# Our Region Faces Major Water Challenges

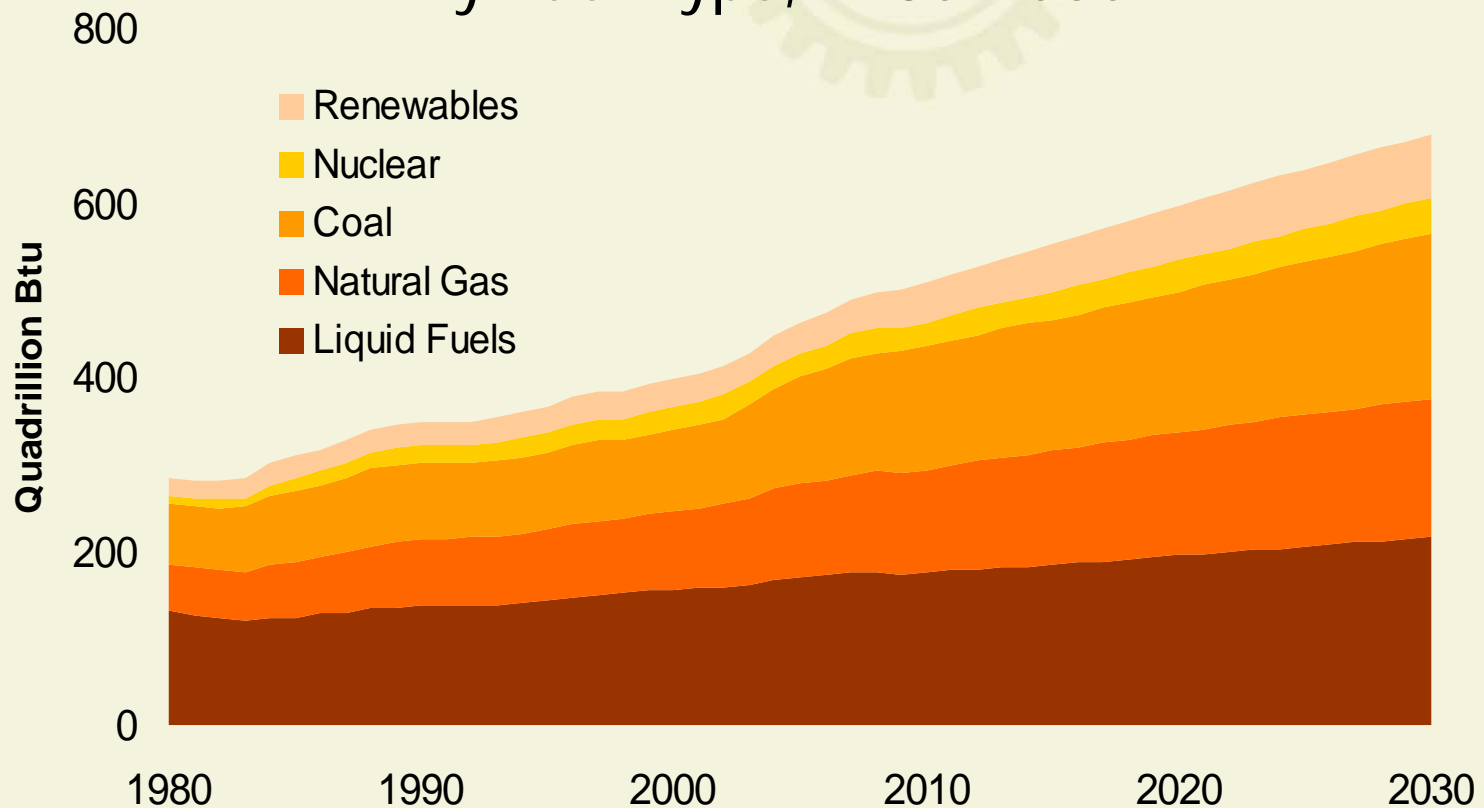
SCAG Region Water Use (Acre-Feet Per Day)





# Oil Demand Expected to Continue Increasing

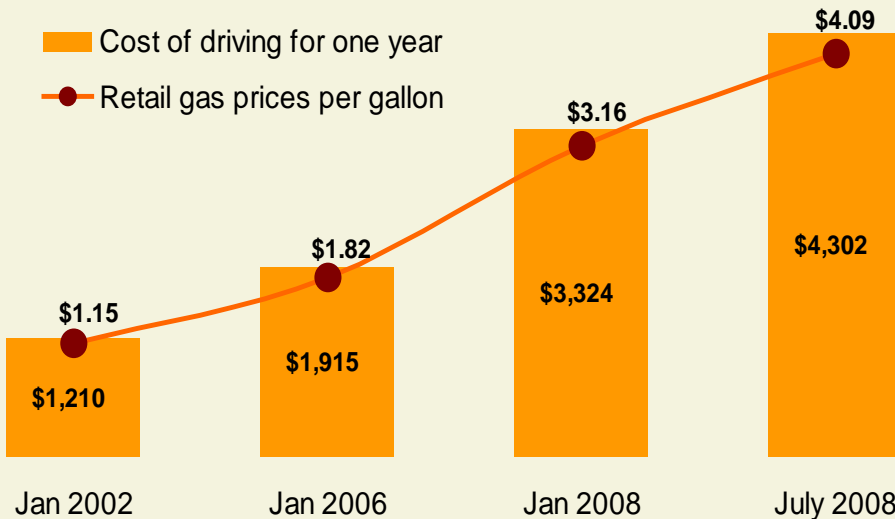
## World Marketed Energy Use By Fuel Type, 1980-2030



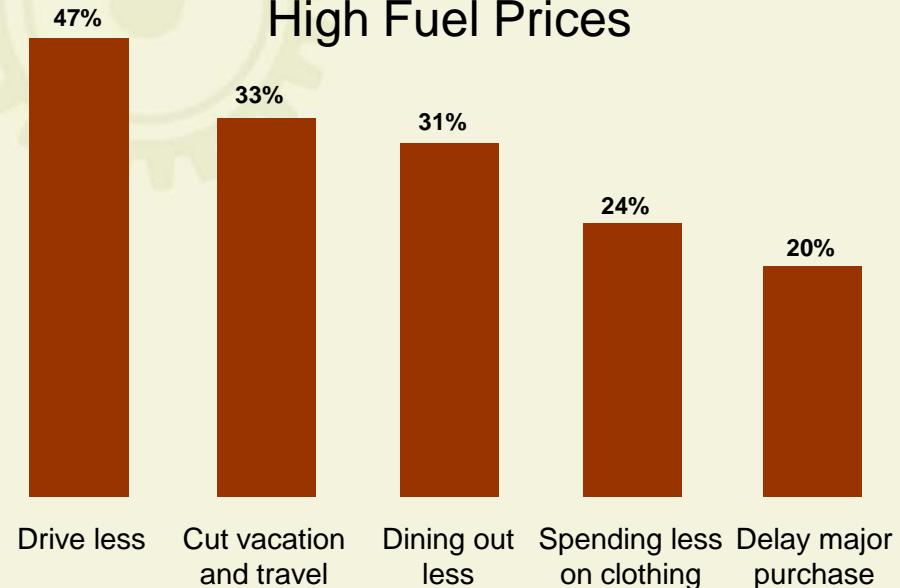
Sources: History: EIA International Energy Annual 2006 (June-December 2008).  
Projections: EIA, World Energy Projections Plus (2009)

# Higher Gasoline Prices Impact Retail Spending

## Gasoline Price and Driving Costs



## How Consumers React to High Fuel Prices



- A household will spend over **\$4,000** to drive for one year, more than double the driving costs in 2006.
- The increase in gas prices since 2006 has cost U.S. drivers more than **\$360** billion per year in driving costs.
- Economists estimate that nationally, for every **one cent** increase in gasoline price, spending in other areas will decline by **one billion dollars**.

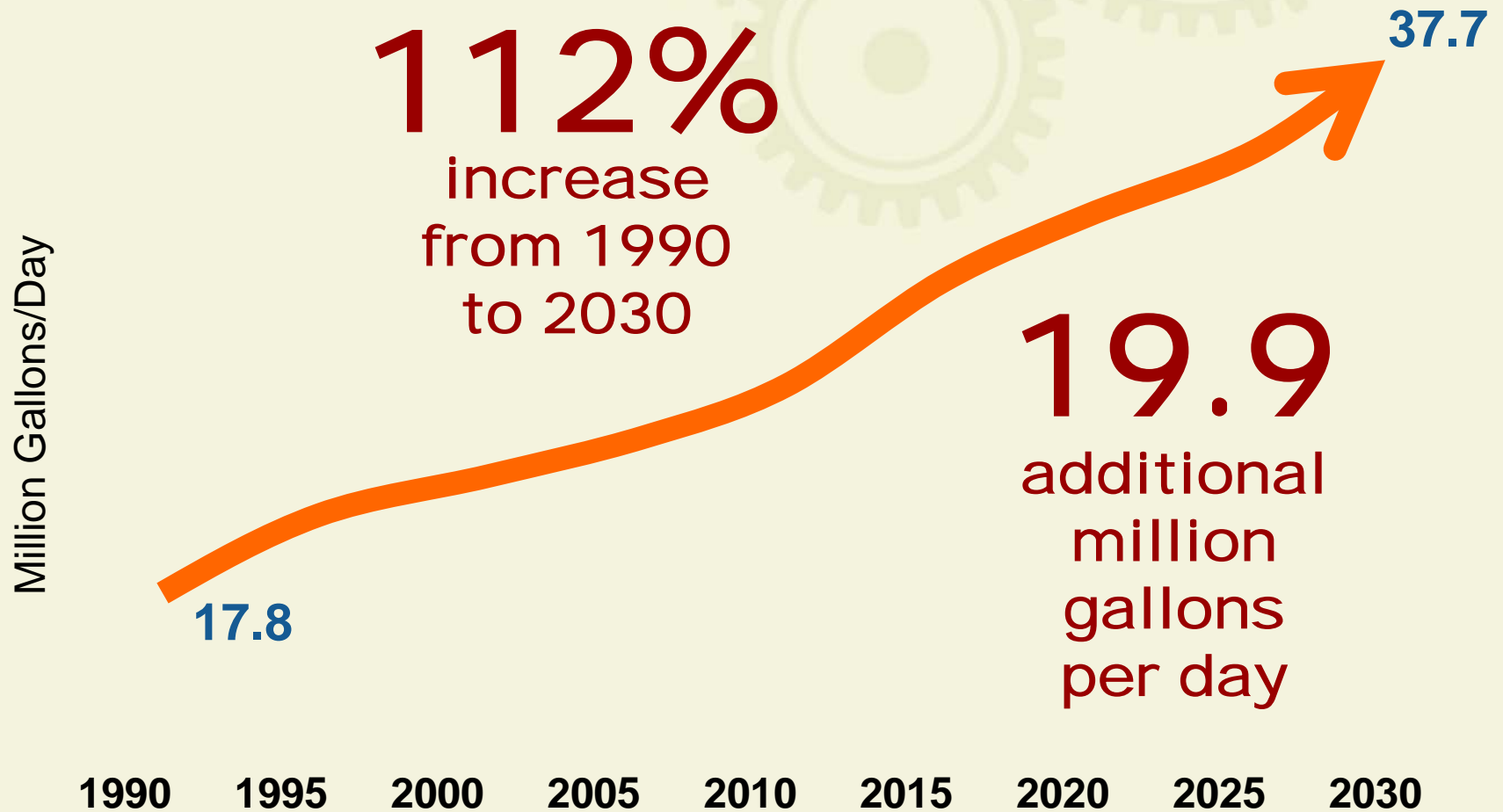
# SCAG Region Energy Facts

**23+** million gallons of  
petroleum consumed daily

**15%** electricity generated from  
renewable resources

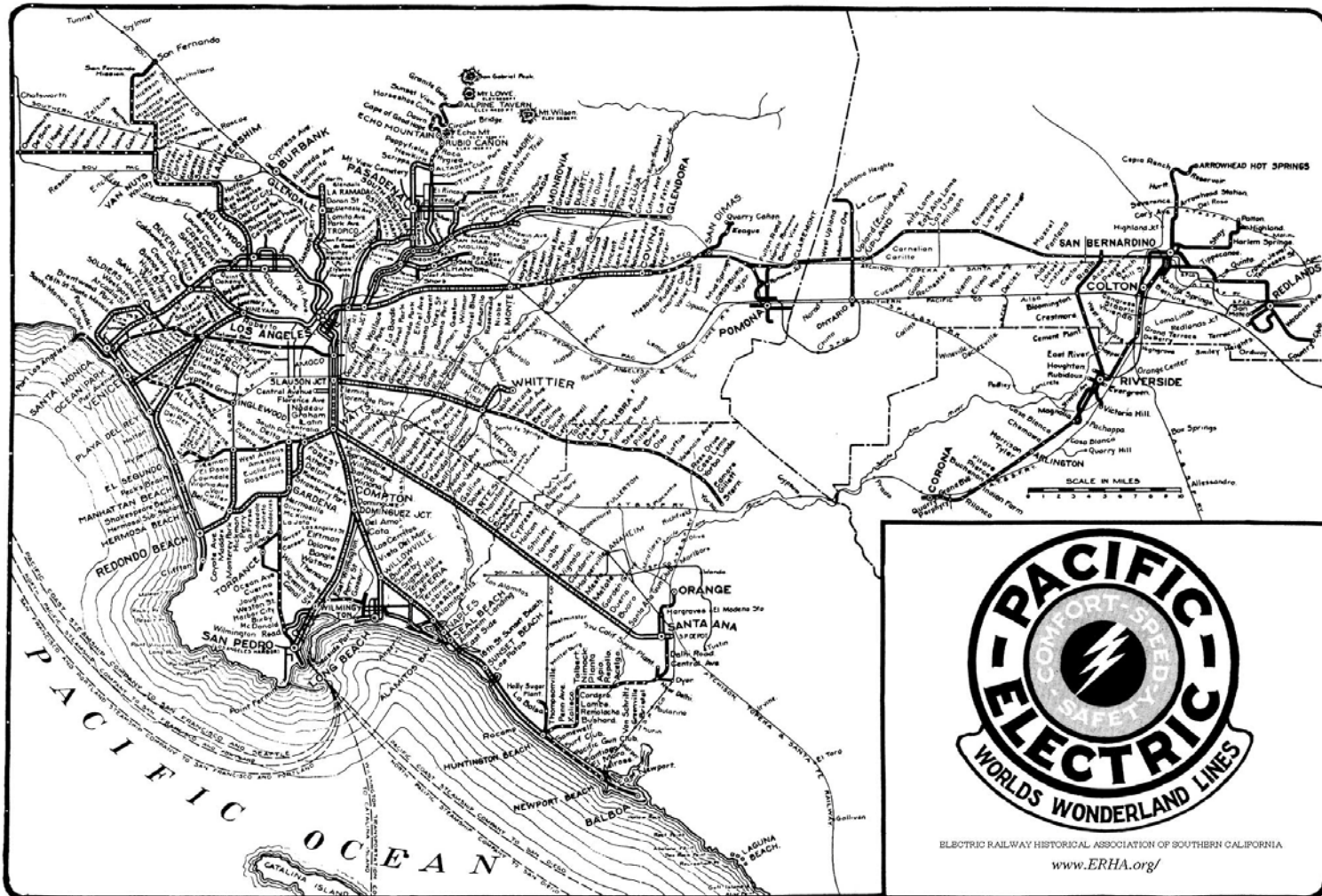
**20%** increase in vehicle fuel  
consumption in last 10 years

# SCAG Region Fuel Consumption



Source: California Department of Transportation, Division of Transportation System Information. (December 2006). California Motor Vehicle Stock, Travel and Fuel Forecast.

# LINES OF THE PACIFIC ELECTRIC RAILWAY IN SOUTHERN CALIFORNIA



ELECTRIC RAILWAY HISTORICAL ASSOCIATION OF SOUTHERN CALIFORNIA  
[www.ERHA.org](http://www.ERHA.org)



# 1944

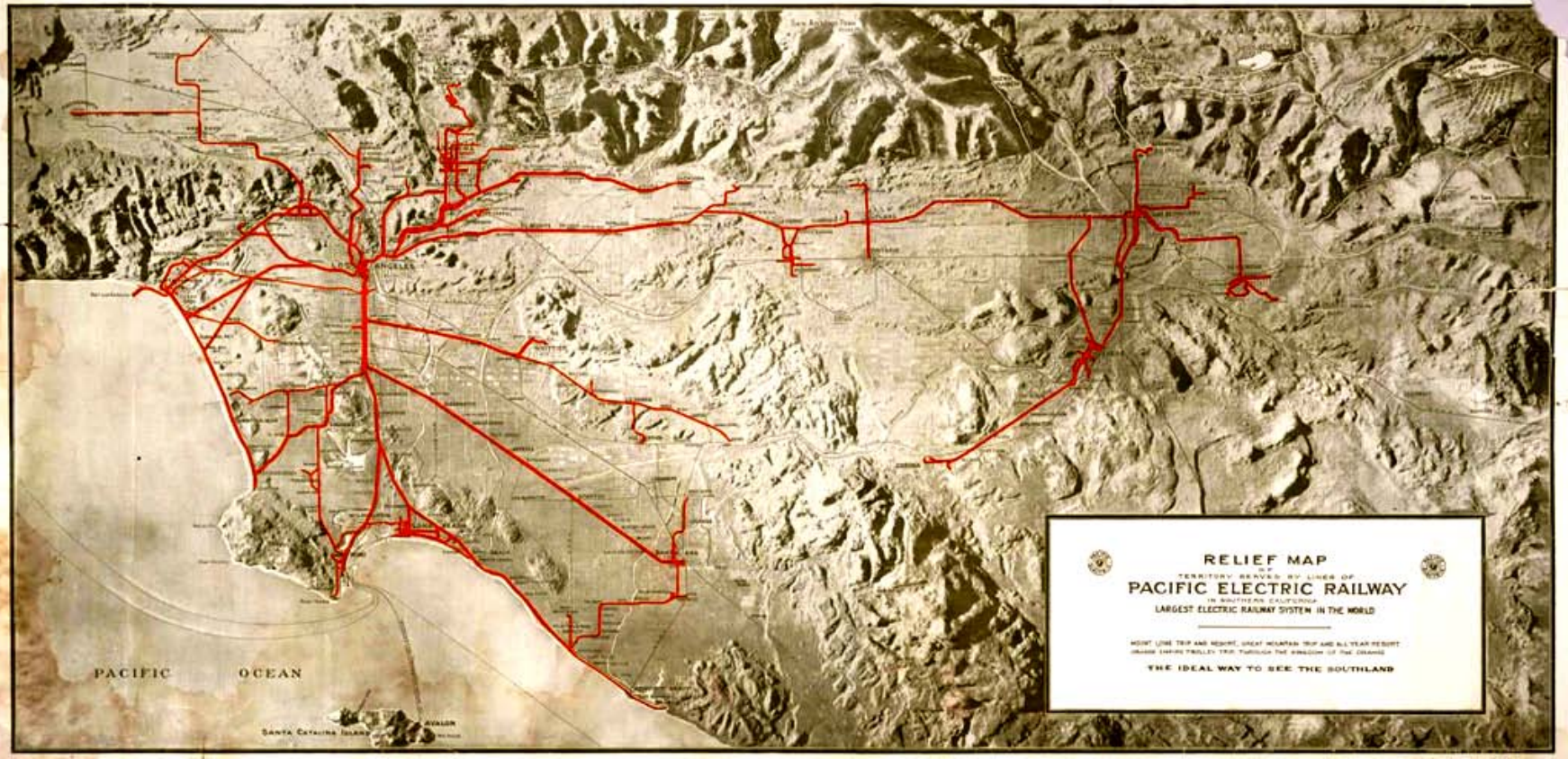
## Electric Regional Rail Transit

**Four Counties**

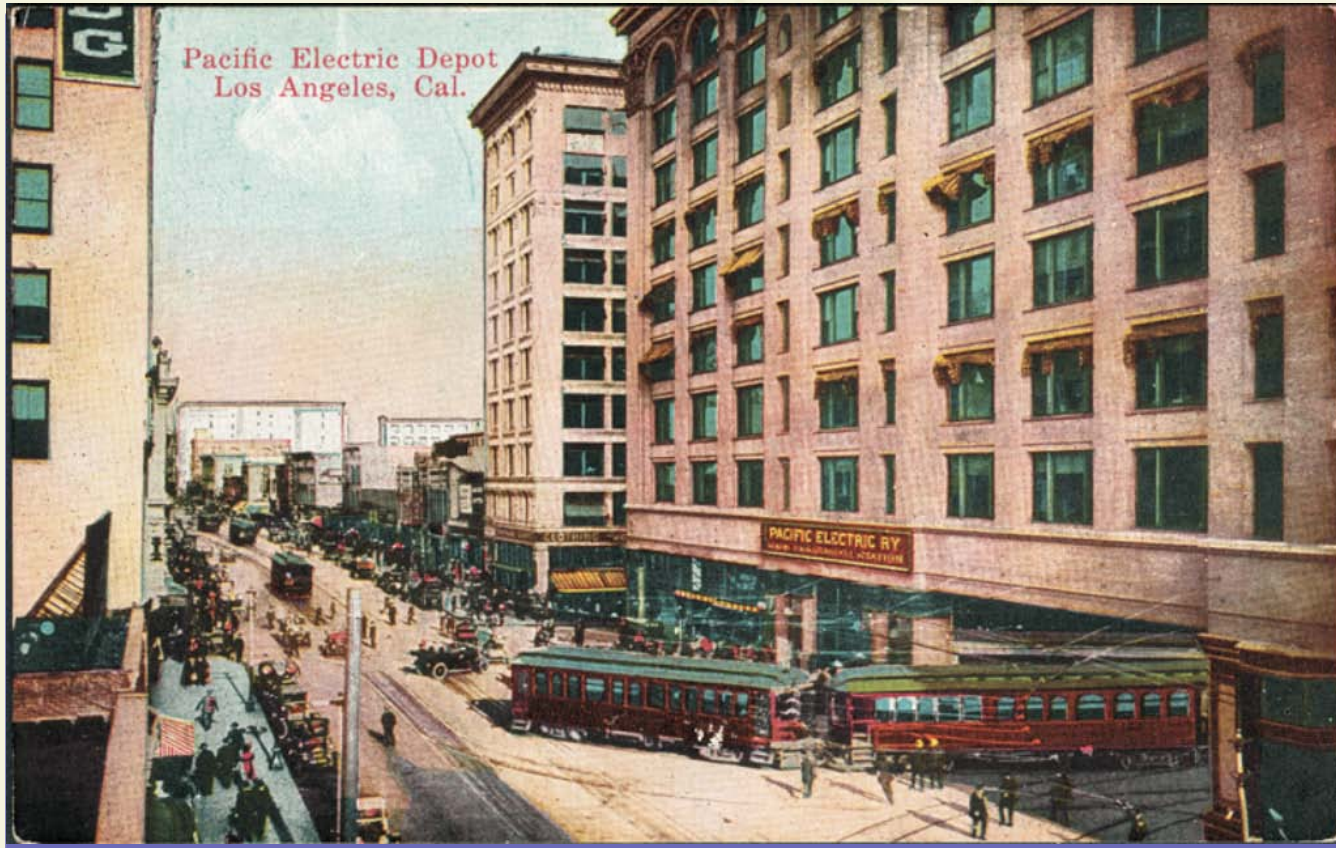
**1,150 Track Miles**

**900 Cars**

**109 Million**







**Los Angeles Pacific Electric Railway Depot, circa 1910**





# MEASURE R RAIL TRANSIT



BACK TO PACIFIC RED CAR DAYS

\*Excludes 11.5 mi. additional BRT

# What we've learned

- **Perfect storm of change**
  - Demographics
  - Water and energy
  - Investment
- **Need to get many things right all at once:**
  - Integration of outcomes and disciplines
  - Short term gains and long term goals
  - Finance structure
  - Governance structure

# Where are we going?

- **Outcome oriented governance vs. prescriptive programs**
- **Using knowledge to make decisions vs. using knowledge to avoid decisions (or, sometimes you have to make tough choices)**
- **Driving change by unleashing creativity, efficiency, and value**

For more information  
please contact

Hasan Ikhata  
Executive Director  
[ikhata@scag.ca.gov](mailto:ikhata@scag.ca.gov)



SOUTHERN CALIFORNIA  
**ASSOCIATION of GOVERNMENTS**  
[www.scag.ca.gov](http://www.scag.ca.gov)