



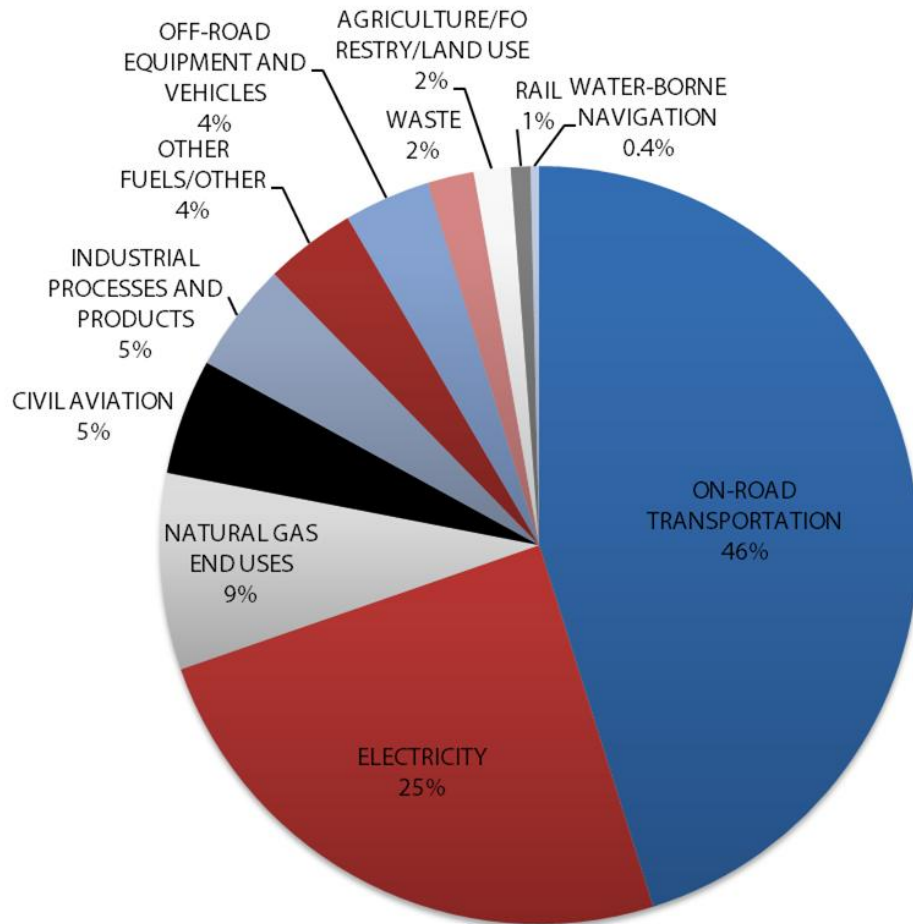
SB375 Sustainable Communities  
Strategy Implementation:  
*Reducing Energy Use through  
Regional Planning*

21st Annual UCLA Lake Arrowhead Symposium  
Energy Planning and Land Use Session  
October 17, 2011

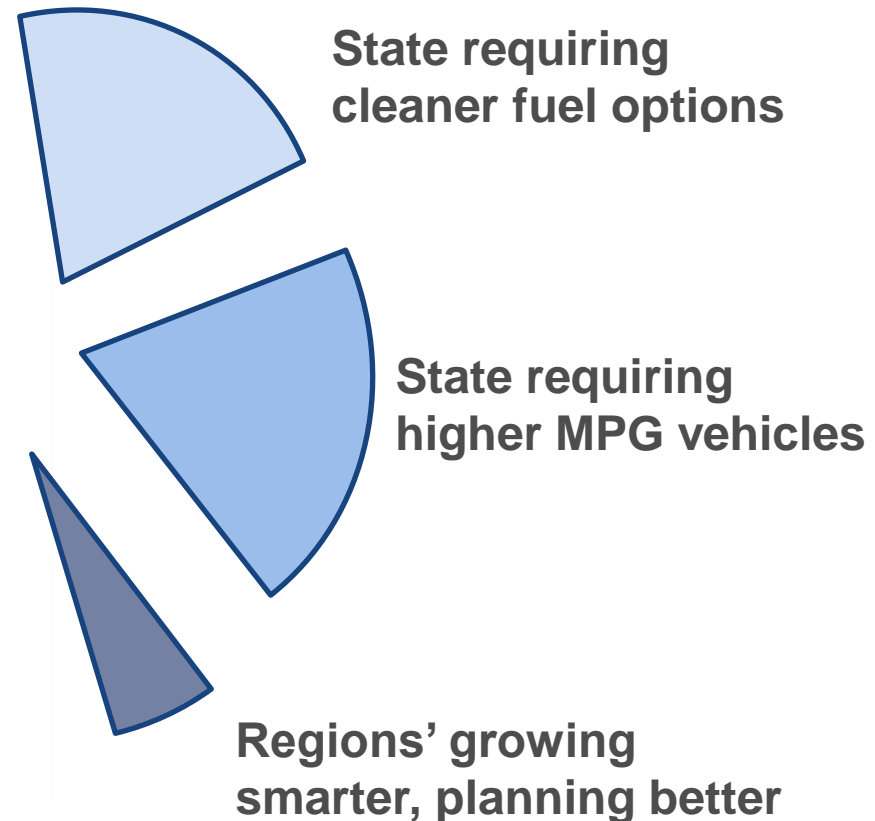
# SB 375 (2008) Sustainable Communities Strategy



# San Diego County's GHG Emissions



## State Approach to Cutting On-Road GHGs



# GHG Reductions: CARB Targets and SANDAG Planning

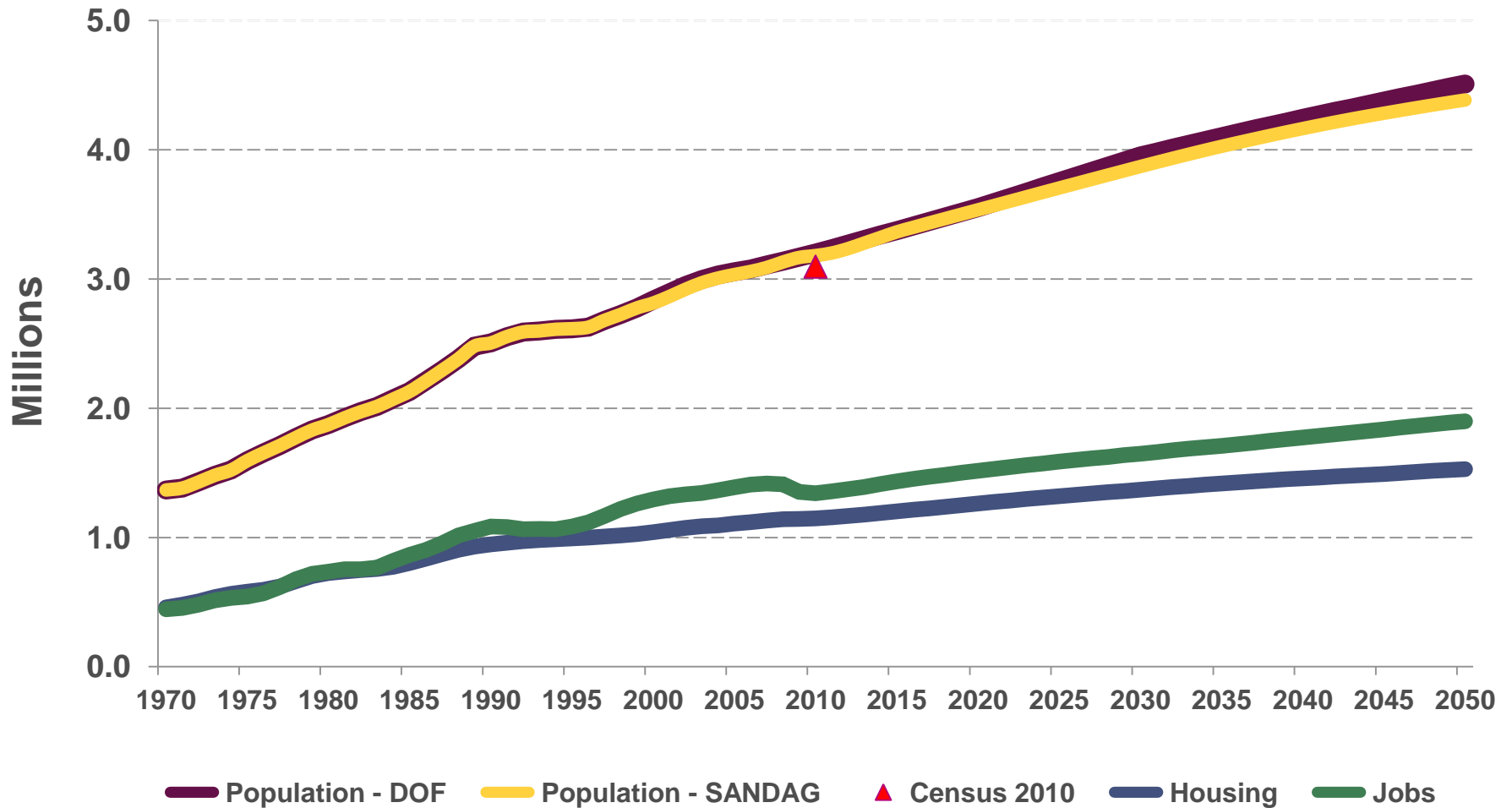
Target Year	CARB Target	Draft 2050 RTP/SCS
2020	7%	14%
2035	13%	13%

Per Capita Reductions from 2005  
(26 lbs/person)

# Planning for a Sustainable Future

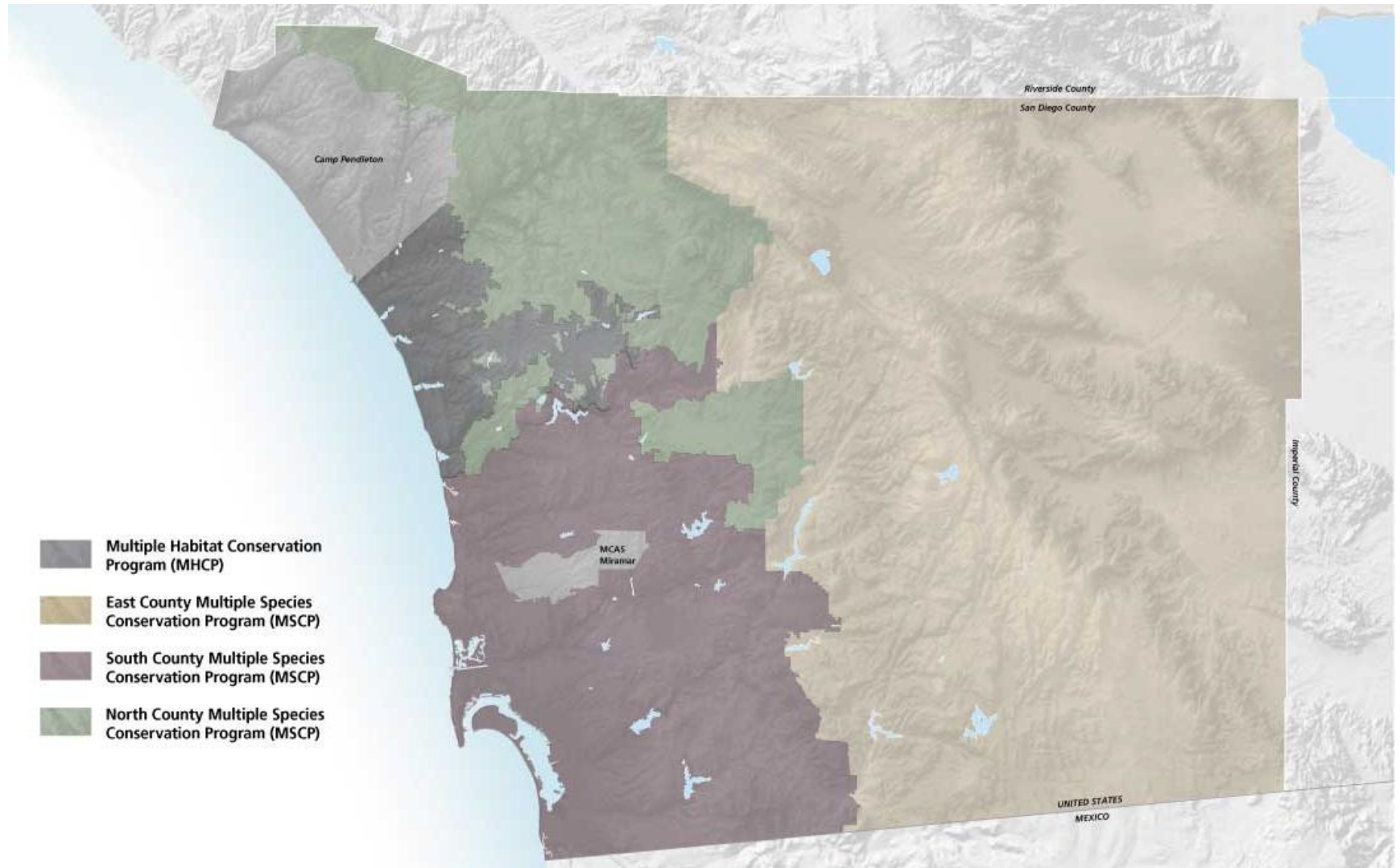
- Provide more transportation choices through an integrated system
- Preserve natural resources and promote smart growth
- Maximize investments and meet funding challenges

# San Diego Regional 2050 Forecast: Population, Jobs, Housing

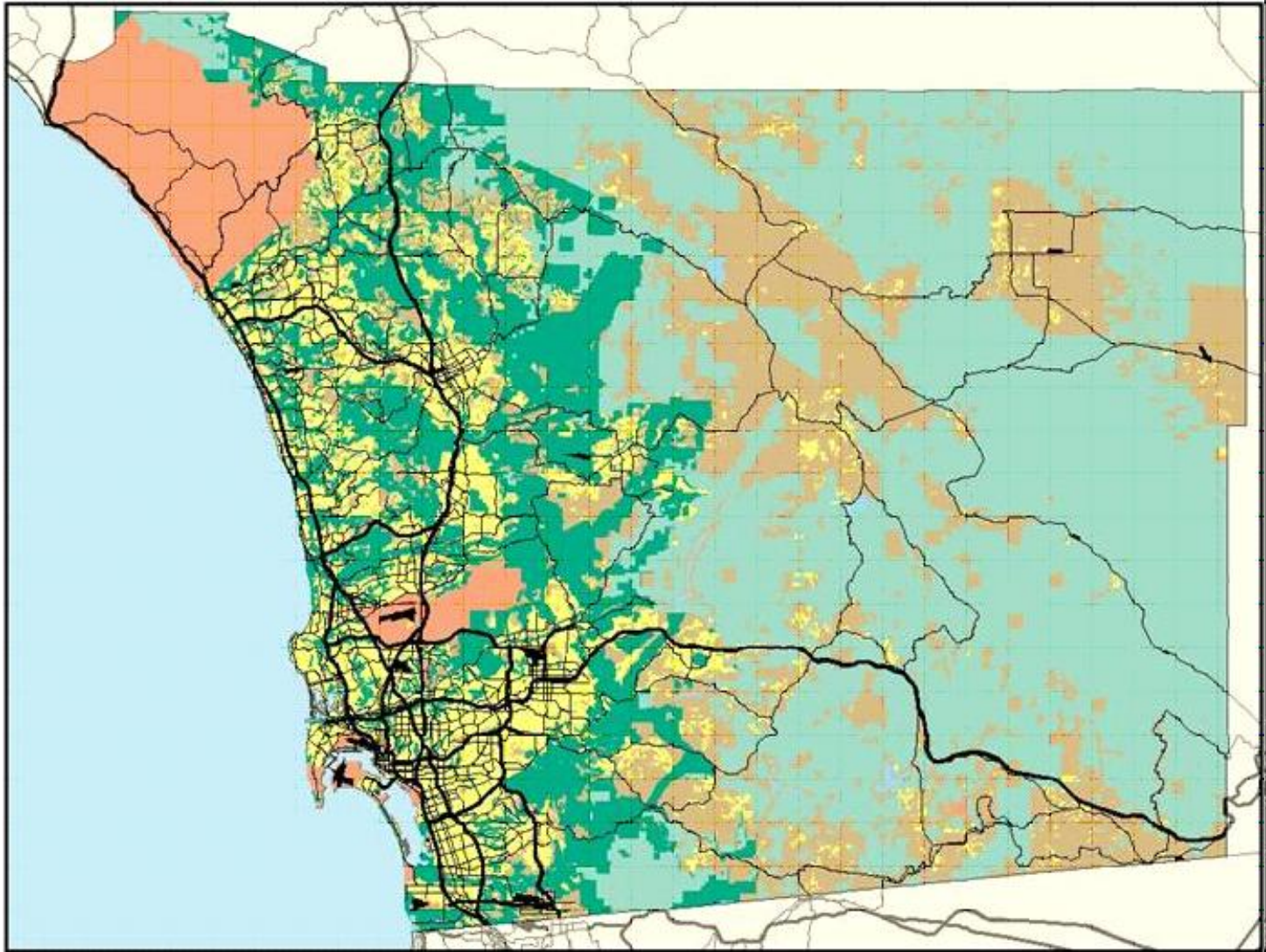


Population - DOF    Population - SANDAG    Census 2010    Housing    Jobs

# Habitat Conservation Planning Areas in the San Diego Region



# Land Use-Transportation Connection







## SANDAG Regional Comprehensive Plan's (RCP's) Focus

- Better connecting land use and transportation
- Using our plans to guide public facility and environmental investments
- Making it happen through *incentives and collaboration*



# Incentives and Collaboration

## *Smart Growth Tool Box*

### Planning Tools

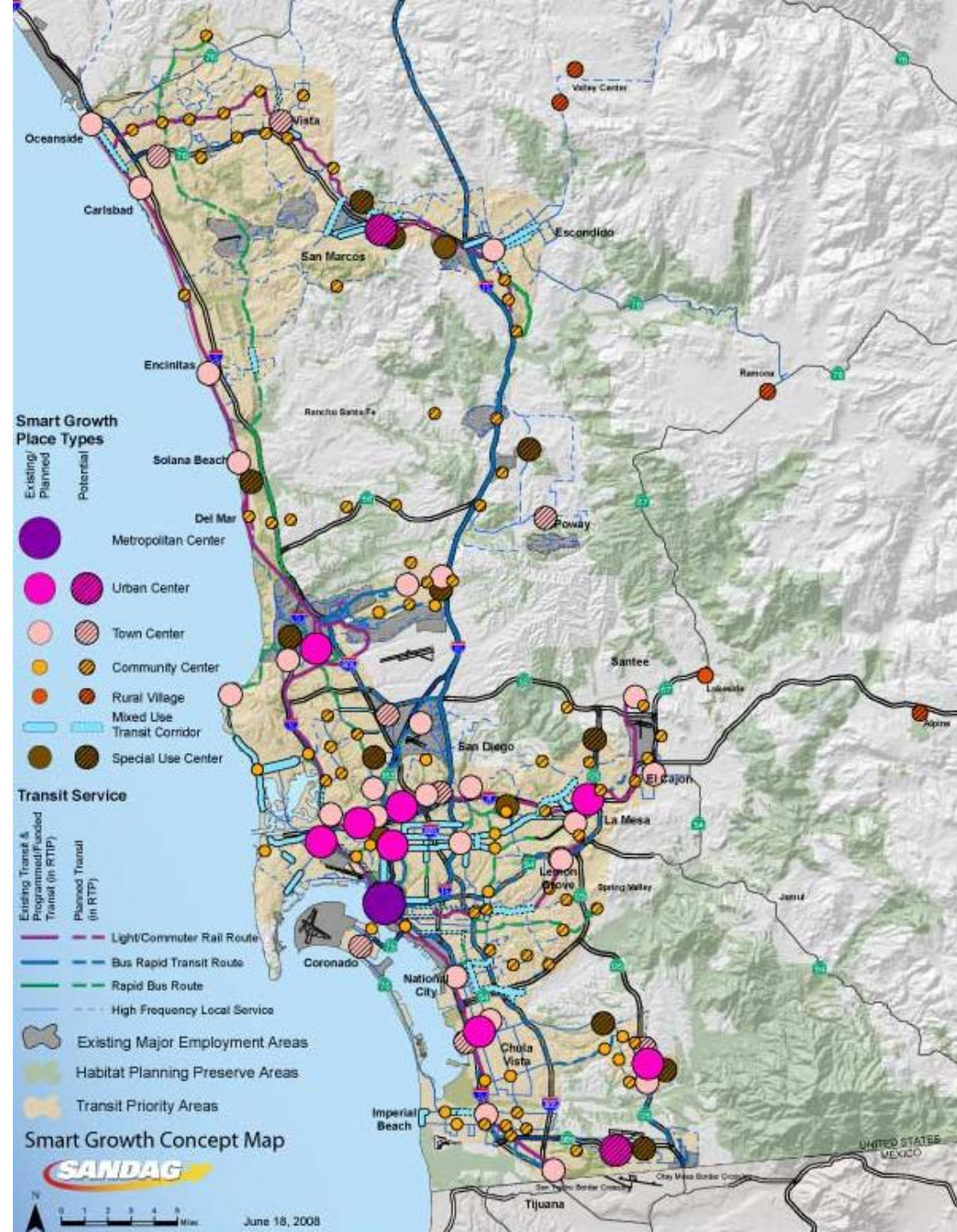
- Smart Growth Concept Map
- Visualization Tools and Smart Growth Photo Library
- Smart Growth Design Guidelines
- Trip Generation/Parking Study
- San Diego Regional Bicycle Plan
- Public Outreach Program

### Financing Tools

- *TransNet* Smart Growth Incentive Program
- *TransNet* Environmental Mitigation Program (EMP)
- *TransNet* Bike/Ped Neighborhood Safety Program
- Regional Housing and Smart Growth Financing Strategy

# Smart Growth Concept Map

1. Metropolitan Center
2. Urban Center
3. Town Center
4. Community Center
5. Mixed Use Transit Corridor
6. Special Use Center
7. Rural Village



# SANDAG's Draft Sustainable Communities Strategy and 2050 R.T.P.



# Integrated Transportation System



# Natural Resources and Smart Growth



# Investments and Funding



# Draft 2050 R.T.P. Sustainable Communities Strategy

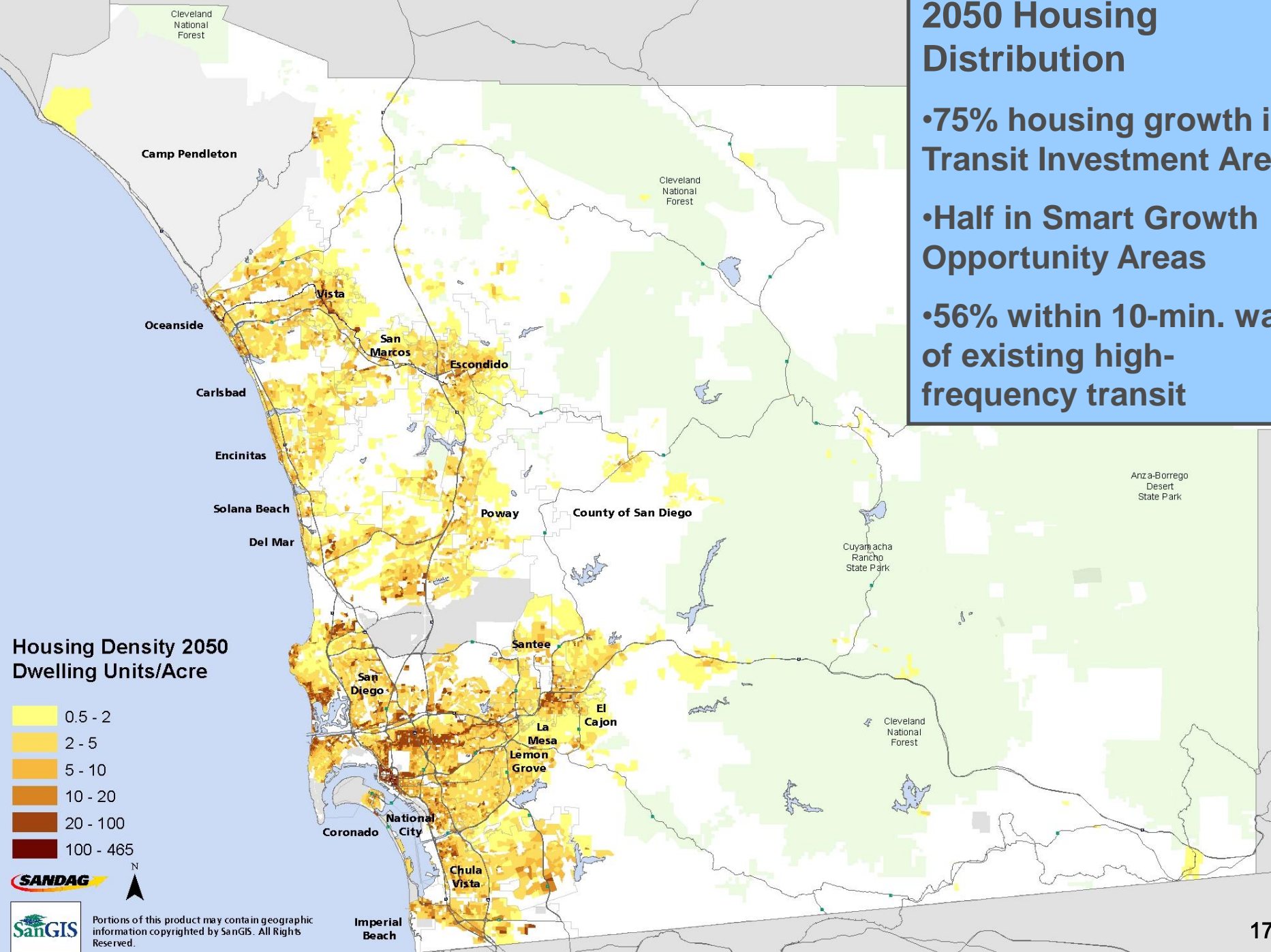
## Compared to No Build:

- Strong improvement in the percentage of work and higher education trips that can be made within 30 minutes
- Daily travel by transit is projected to more than double in the Revenue Constrained Scenario
- Access to transit is projected to improve – 75% of trips could access transit within a ½ mile
- Substantial increase in carpooling, transit, and biking/walking for work trips



# 2050 Housing Distribution

- 75% housing growth in Transit Investment Area
- Half in Smart Growth Opportunity Areas
- 56% within 10-min. wal of existing high-frequency transit

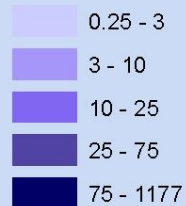


Portions of this product may contain geographic information copyrighted by SanGIS. All Rights Reserved.

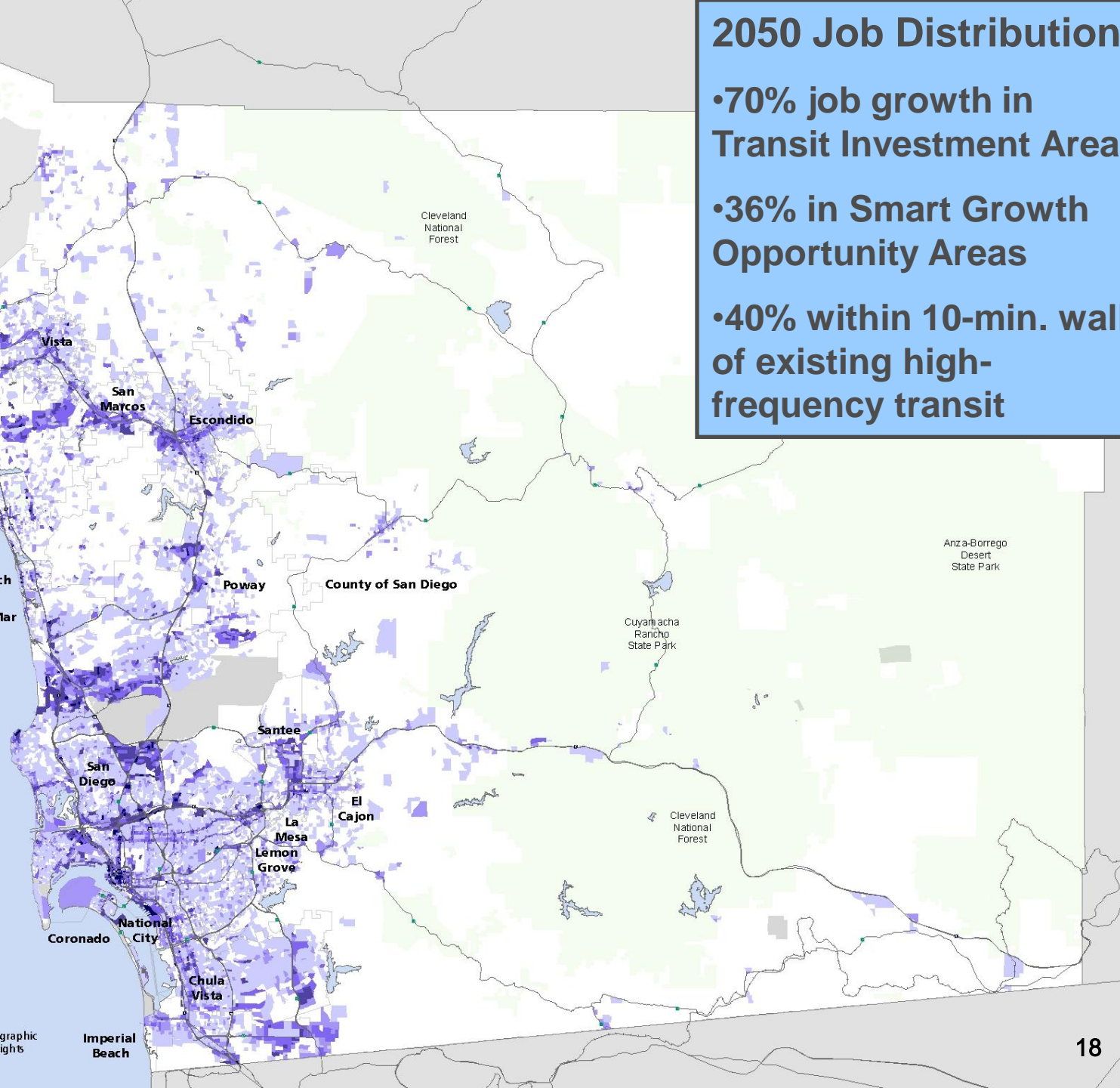
# 2050 Job Distribution

- 70% job growth in Transit Investment Area
- 36% in Smart Growth Opportunity Areas
- 40% within 10-min. wal of existing high-frequency transit

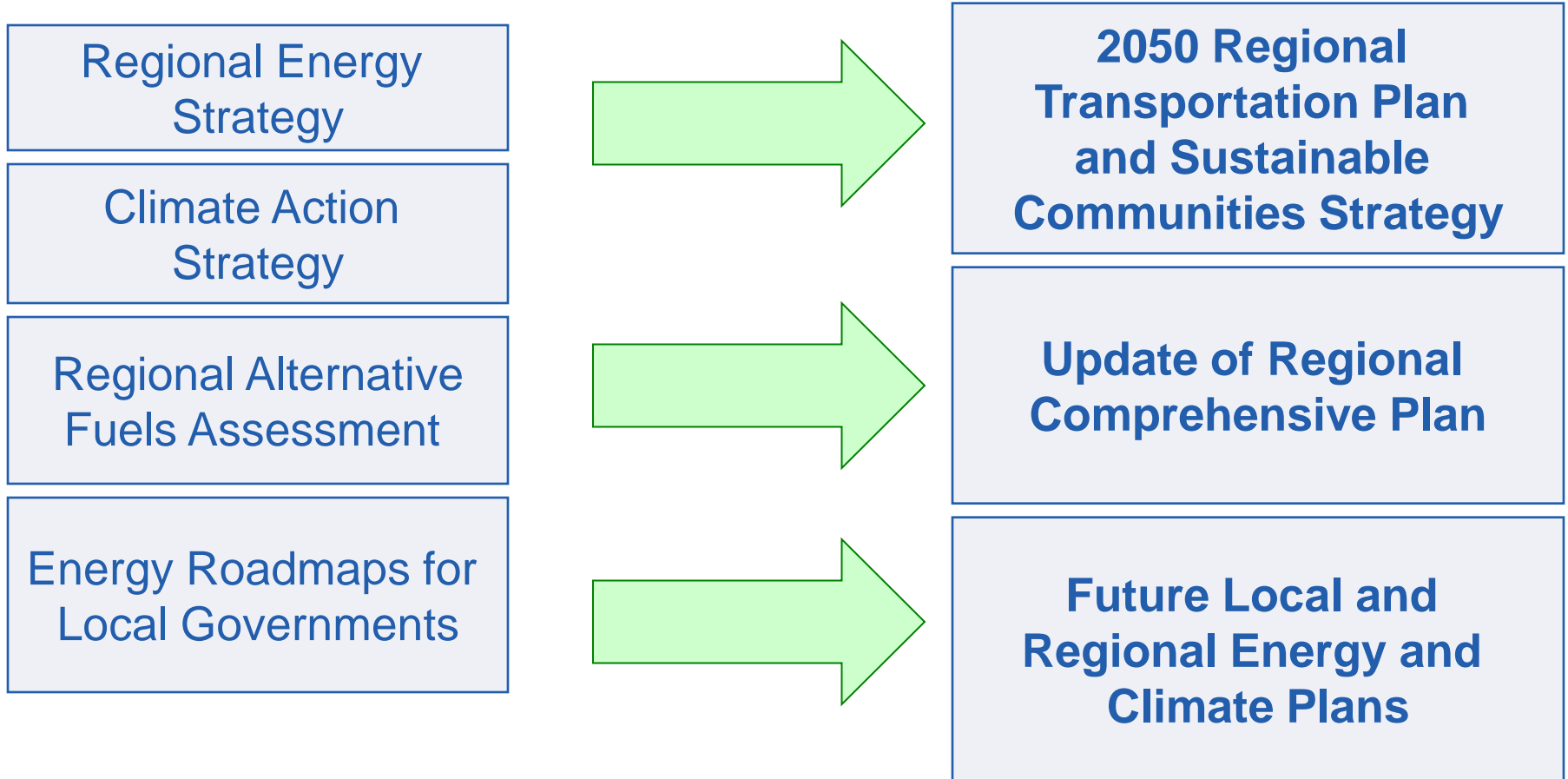
## Employment Density 2050 Jobs/Acre



Portions of this product may contain geographic information copyrighted by SanGIS. All Rights Reserved.



# Integrating Energy Considerations into Land Use Planning





SB375 Sustainable Communities  
Strategy Implementation:  
*Reducing Energy Use through  
Regional Planning*

Susan Freedman  
Senior Regional Energy Planner  
San Diego Association of Governments  
sfr@sandag.org | 619-699-7387 | www.sandag.org