

PARENT MENTORSHIP AND FAMILY REUNIFICATION IN LOS ANGELES COUNTY

LEWIS CENTER AWARD WINNER FOR INNOVATIVE USE OF SPATIAL ANALYSIS AND GIS IN POLICY ANALYSIS

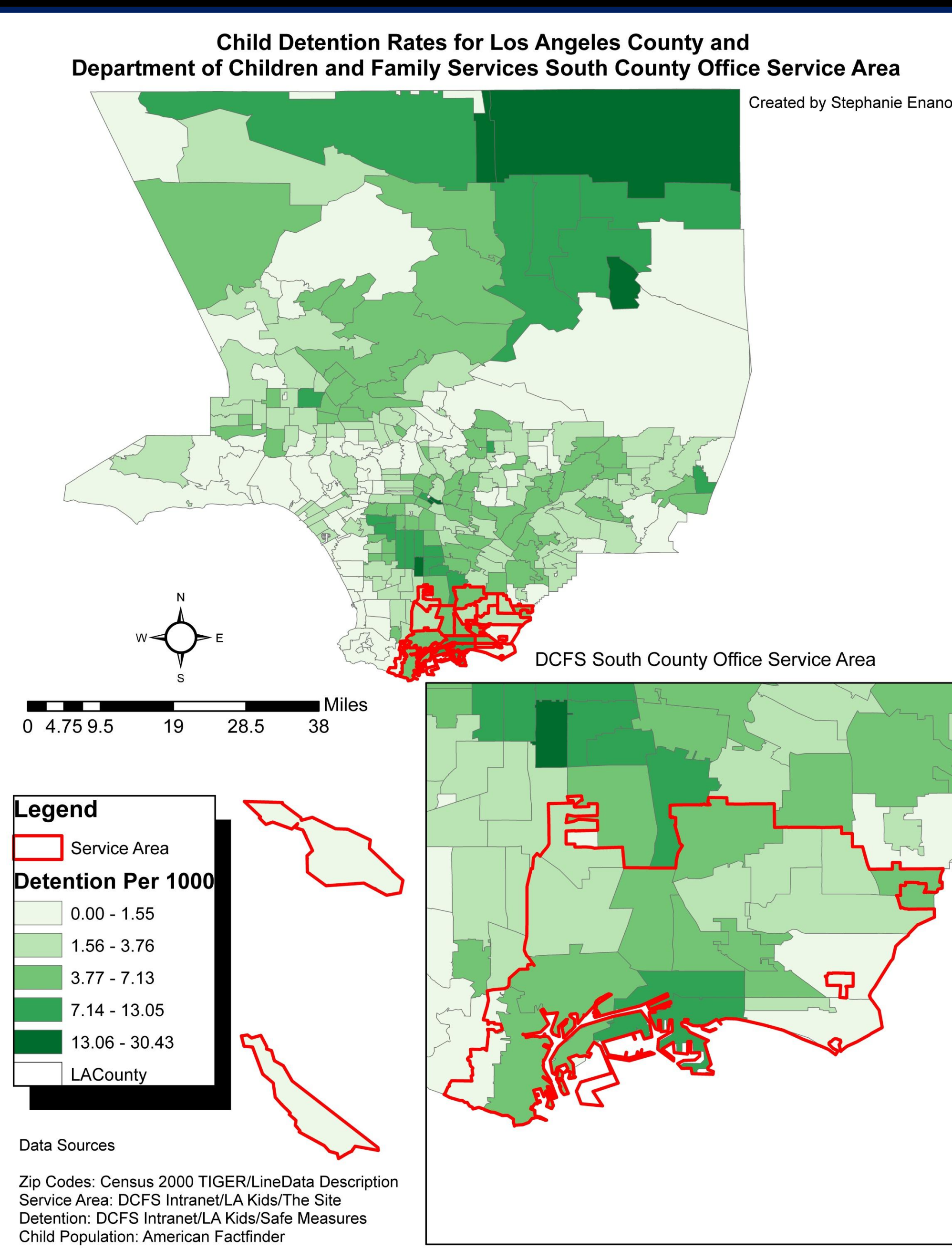
POLICY QUESTION

RESULTS

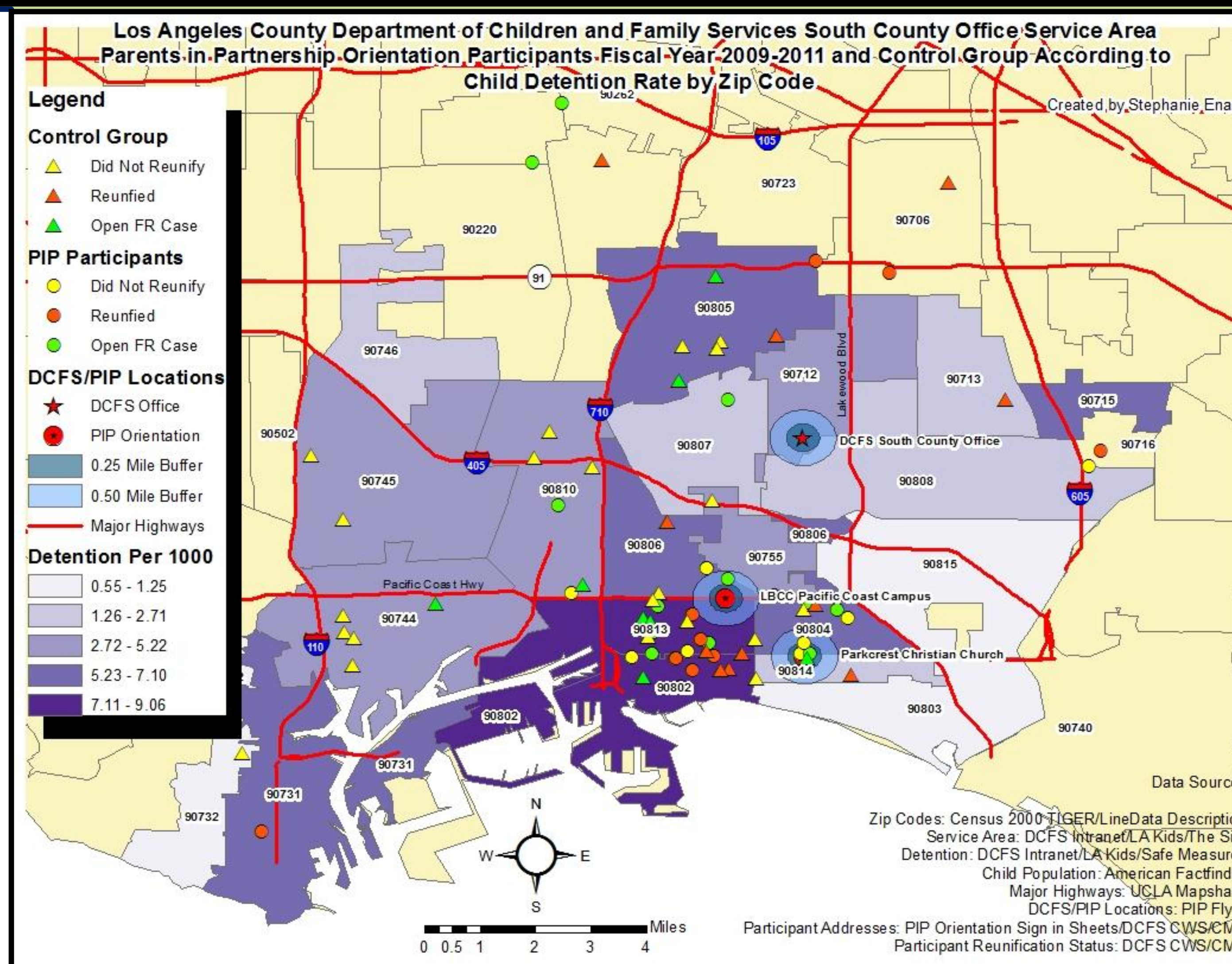
- Child welfare mentor programs, such as the Los Angeles County Department of Children and Family Services (DCFS) Parents in Partnership (PIP), are successful in increasing parent engagement.
- A limited amount of research is currently available on parent mentorship in child welfare.
- How does it relate to the case outcome of family reunification?
- How does the availability and geographic proximity of other child welfare relevant services impact family reunification?

- Parents in Partnership participants:
- had increased reunification rates ($p=.054$);
 - were 22.6% more likely to reunify;
 - had an average stay of 121.6 days longer; and
 - reunified an average of 384 days sooner, when they attended a PIP parent orientation within the first 90 days of having their children removed, than parents who attended a PIP parent orientation after their children had been in foster care for over a year ($p=.002$).

SERVICE AREA

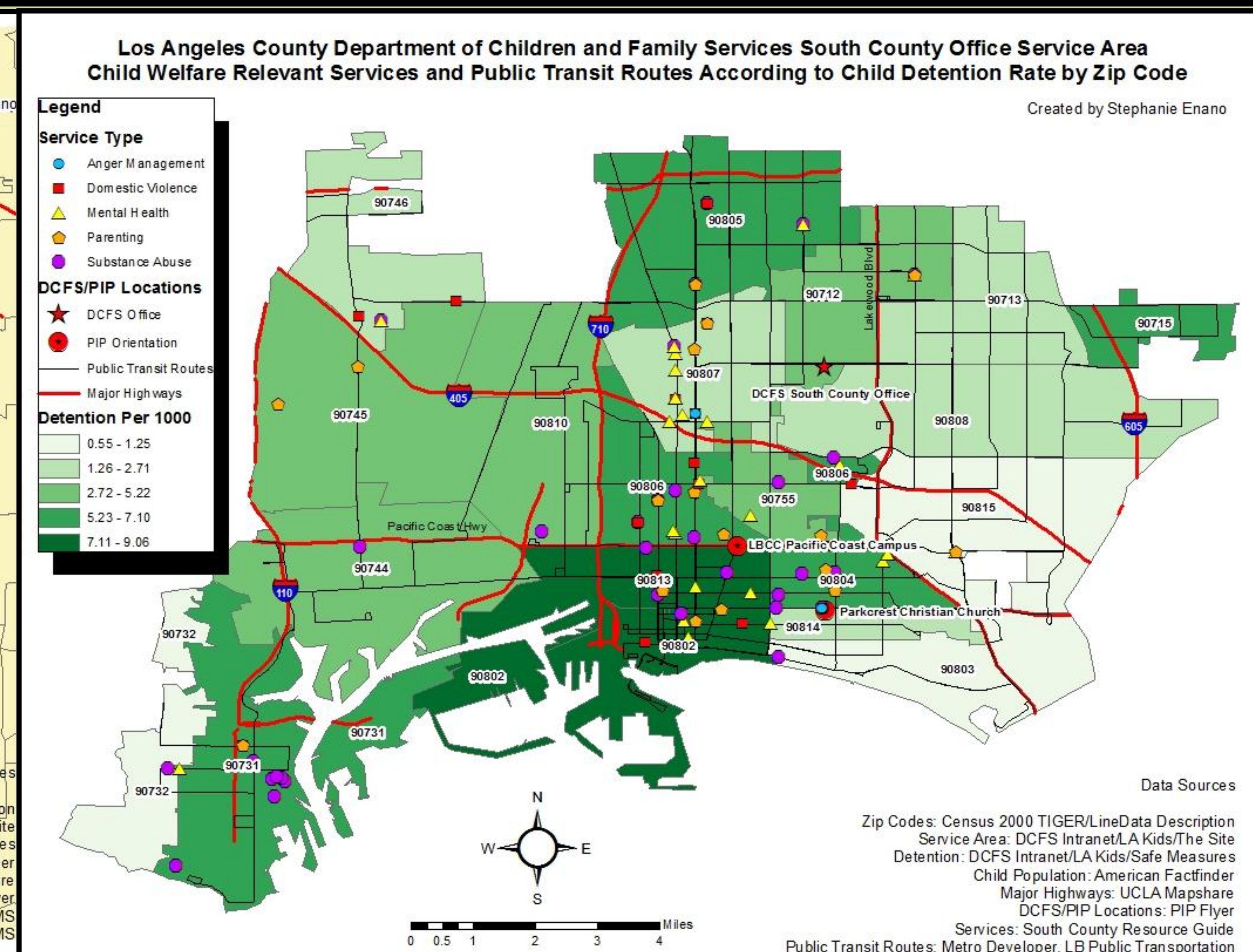


REUNIFICATION



Residences	PIP Participant Sample	Comparison Group
PIP within Half Mile	12.2	2.0
PIP within One Mile	10.2	4.1
Child Welfare Relevant Service within Half Mile	77.6	49.0
Child Welfare Relevant Service within One Mile	79.6	67.3
Average Distance to PIP	0.07	0.14
Average Distance to Child Welfare Relevant Service	0.07	0.14

SERVICES



CONCLUSIONS

- Family residence distance to PIP, as well as other child welfare relevant services, may be negatively correlated to family reunification.
- Availability and proximity to child welfare relevant services should be considered in child welfare relevant service evaluations and child welfare case outcome assessments.

Stephanie Enano, M.S.W. Candidate 2012
Data Collected for SW 241G, Fall 2011
Revised for SW 281C, Spring 2012