

# CALOTS Upgrade for Performance Monitoring

A project of the Southern California  
Association of Governments  
supported by the UCLA Lewis Center  
for Regional Policy Studies

# Agenda

- 1. Project Overview**
- 2. Existing CALOTS tool**
- 3. SCAG SCS/RTP Performance Measures**
- 4. Parameters for performance measures**
- 5. Open Discussion:**
  - Project Performance Metrics**
  - Project Features**

# Project Overview

- **Goal 1:** Transform existing public analytical tool for planning in the Sustainable Communities Planning era
- **Goal 2:** Create a common regional performance monitoring tool for use in neighborhood & community-level time series analyses
- **Goal 3:** Make the tool useful for a range of stakeholders:
  - Transportation & land use planners working in cities, subregions, & at the regional level
  - Community groups interested in Sustainable Communities Strategy implementation
  - Real estate developers seeking infill opportunities in walkable transit priority areas with high locational efficiency
  - Elected officials seeking high level information about changes in employment

# Code Name: 'REVISION'

- **Regional Engaging, Visioning, & Implementing Sustainability through Infill Opportunities Network**
- You can help us find a better name

# Project Timeline

| Task  | Time Frame                      |
|---|---------------------------------|
| Project Start   | November 1, 2013                |
| <u>Work Group</u> – Provide final input on dataset & functionality priorities   | March, 2014                     |
| UCLA work on the website  | April, 2014 – November, 2014    |
| <u>Work Group</u> – Provide input on beta site  | November, 2014 – February, 2015 |
| <u>Work Group</u> – Provide input on final site   | April, 2015                     |
| <u>Work Group</u> – Provide input on training materials & training plan to ensure outreach includes full range of stakeholders who may use the site | June, 2015                      |
| UCLA & SCAG to conduct training & outreach  | July, 2015 – October, 2015      |

☹ Delay in beginning the project means outreach & training won't be ready in time for strategic decision-making for the 2016 RTP/SCS Update

**ABOUT**  
LEARN ABOUT CALOTS

**GET STARTED**  
HOW TO USE SITE

**TRANSIT PROFILE**  
REVIEW STATION AND HUBS

**RESOURCES**  
GATHER RESOURCES

**HELP**  
CALOTS HELP



## What's New

**NEW!** Mapping Site Amenities: A Tool for Affordable Housing Developers in Los Angeles >>

S.B. 375 and Southern California: Climate Change, Economy and Infrastructure – Policies that Shape our Future (Ontario, CA) >>

Learn More: SB 375 Regional Implementation Process >>

## Program



building partnerships. serving communities. >>

## Quick Start

[Wizards](#)

[Updates](#)

[Events](#)

[Features](#)

### Start Mapping !!



The Wizard section on CA LOTS is designed to guide users, to easily look up information and to get started with maps and spatial analysis.

[See sample queries!](#)

## Spotlight

### Infill Development



The planning tool can be used to estimate the infill potential of industrially-designated land in unincorporated LA County...>>

< **1** 2 3 >

# What is CA LOTS?

- Comprehensive information portal for regional planning, land/development analysis for the SCAG region
- Interactive website provides a platform for users to query and spatially map contextual indicators



# What Does CA LOTS Offer?

- Scan data at different geographic levels: TAZ, census tract, parcels, etc
- Review, analyze, and monitor focus areas such as transit stops
- Get aggregated data and custom reports at different levels
- Analyze planning indicators from regional to neighborhood level
- Parcel data



# CA LOTS: Parcel Lookup

**CA lots**

Advanced Search | Themes | Print Map | Save Map | Create Neighborhood | Report

Map | Bird's Eye View | Aerial

Change Location: 10909 Rose Ave, 90034 Go Layers Legend Help

Road Aerial Bird's eye Labels

**BIRD'S EYE VIEW AND AERIALS**

1 Year Home Value Change (Address: 3317 KELTON AVE)

| Dollars | Percent |
|---------|---------|
| \$1.7m  | +6%     |
| \$1.68m | +5%     |
| \$1.66m | +4%     |
| \$1.64m | +2%     |
| \$1.63m |         |

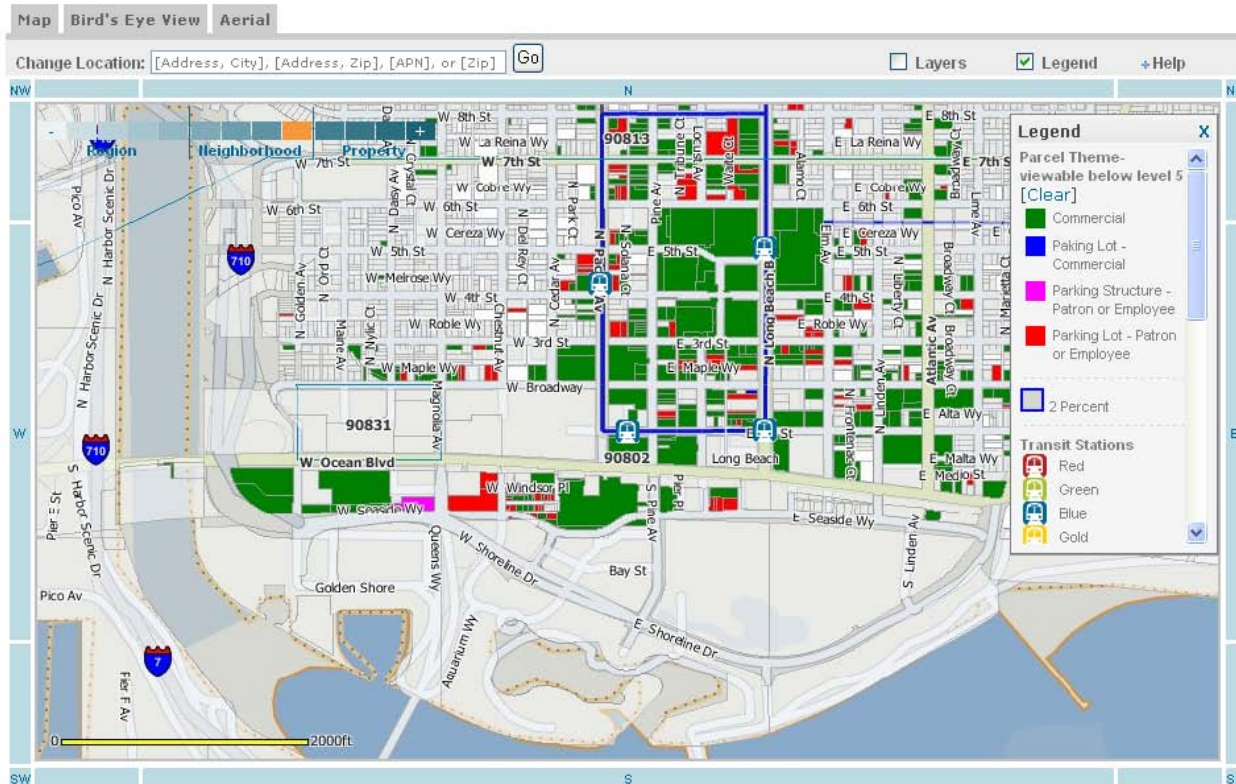
Queries & Scenarios

# APPLICATIONS

# SCENARIO 1:

A developer is seeking properties on the commercial corridor surrounding public transit stop A. Can LOTS be used to find large parking lots that might be redeveloped to provide denser mixed use projects?

# Scenario 1:



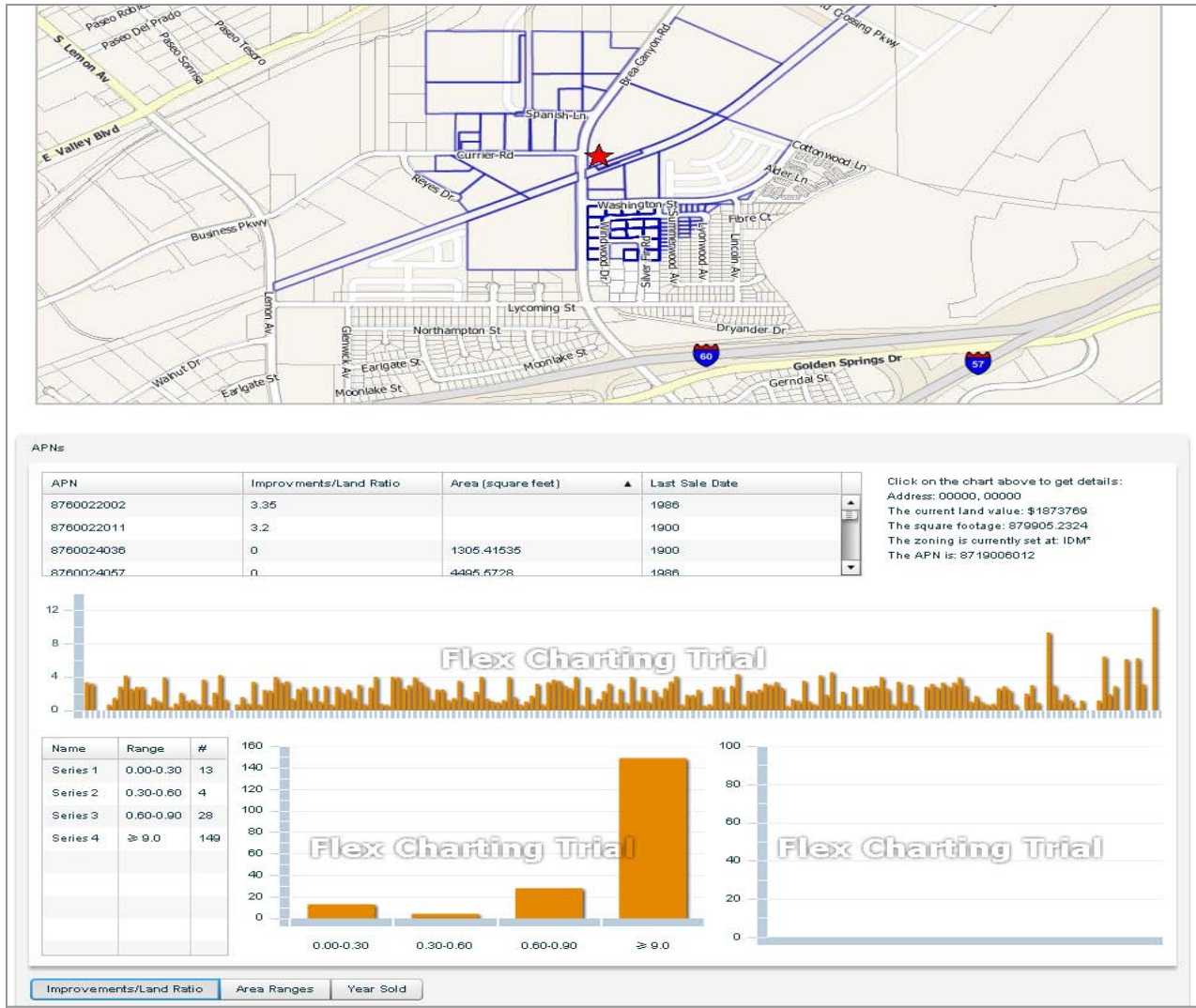
## SCENARIO 2:

**An agency wants to acquire the largest parcel with the lowest improvement to land value ratio within one-third of a mile from transit stop B. Can LOTS identify these locations?**

:: Sort by Square footage ASC, then chose shortest bar on the right



# Scenario 2:

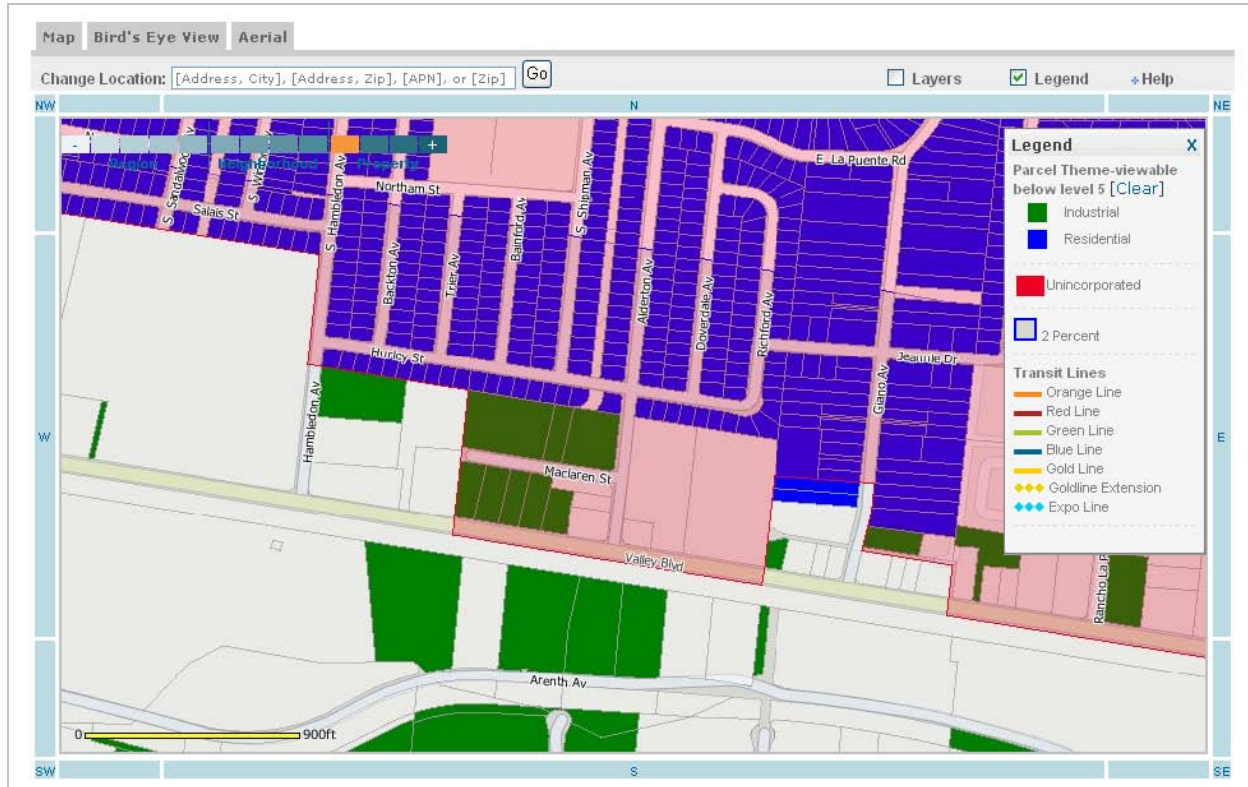


# SCENARIO 3:

**A developer wants to build housing on industrial sites in the unincorporated areas the County of Los Angeles. Can LOTS be used to find locations that are adjacent to residential communities to improve the chance for a rezoning approval and project marketability?**



# Scenario 3:



# SCENARIO 4:

**A transit stop is adjacent to a TAZ. Can LOTS be used to identify how much new housing must be built to address the increase in households in that area?**

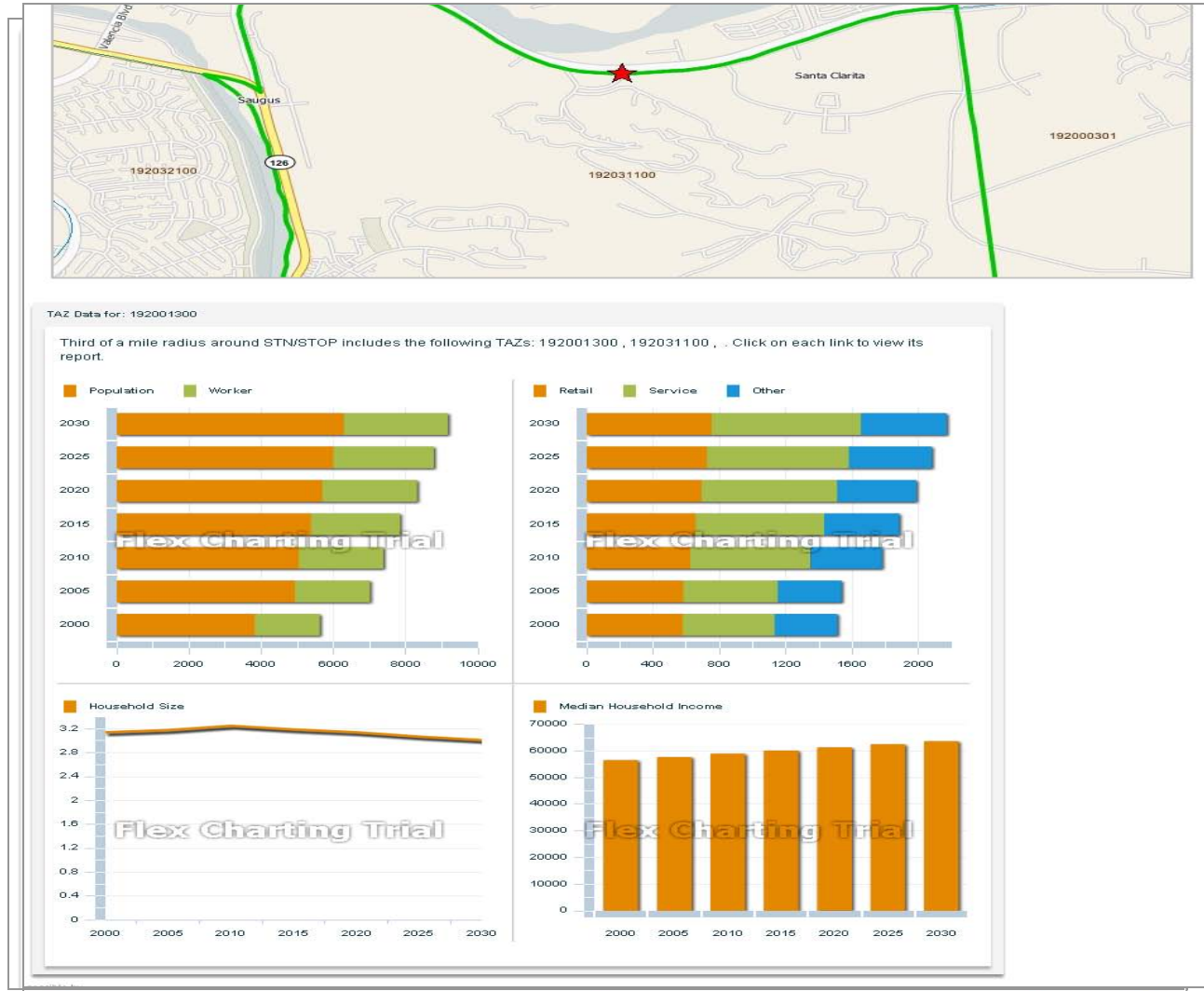
3 images:

- Map: Santa Clarita Metrolink Station.

-T ransit Station Profile: Shows the population/household change from 2000-2030 via the Transit Station Report

-T AZ Analysis Report: TAZ Analysis Report for TAZ 192001300

# Scenario 4:



# Sustainable Communities Strategy/Regional Transportation Plan Performance Metrics

- The 2012 SCS/RTP contains performance measures for monitoring at the regional level
- The CALOTS project provides resources & tools for local jurisdictions to track progress

# SCS Performance Metrics

| Plan   | Color Code |
|--|------------|
| To be included in the REVISION tool  | Green      |
| To be researched – additional research required before making a decision   | Yellow     |
| Not to be included in the REVISION tool – usually because the measure is better tracked through some other process | Red        |

# RTP/SCS Performance Measures: Location Efficiency

| Measure                                       | Details   | Plan |
|---|---|------|
| Annual Household Transportation Cost          | Household spending on transportation including costs of vehicle ownership, operation & maintenance, & public transportation |      |
| Housing & Transportation Affordability        | Percent of income spent on housing & transportation   |      |
| Walking Accessibility                         | Neighborhood-level walk access to neighborhood services (e.g., 'walk score')  |      |
| Job Accessibility by Transit                  | Percent (regional) & number (station-level) of jobs within walking distance of transit                                      |      |
| Share of Growth in High Quality Transit Areas | Neighborhood level growth metrics for high quality transit areas  |      |

# RTP/SCS Performance Measures: Location Efficiency

| Measure                            | Details  | Plan |
|------------------------------------|--|------|
| Daily Amount of Walking & Biking   | For work & non-work trips, consider possible integration of Bike/Ped Clearinghouse Data      |      |
| Annual Household Energy Use        | Transportation & space HVAC (reflects energy savings of shared walls & smaller developments) |      |
| Park Access                        | Percentage of residents within 1/2 mile walking distance to open space                       |      |
| Annual Household Water Consumption | Average annual water usage by household  |      |



# RTP/SCS Performance Measures: Health & Safety

| Category/Measure       | Details  | Plan |
|------------------------|--|------|
| Collision              | Accident rates by severity & by mode                               |      |
| Asthma                 | Asthma incidence rate  |      |
| Noise                  | Percent of households living in areas with >65 decibel noise level |      |
| Roadways & Air Quality | Percent of households living <500 feet from high volume roadways   |      |
| Particulate Matter     | Premature deaths due to PM 2.5                                     |      |

\* Data availability limitations at the neighborhood scale

# Other SCS/RTP Performance Metrics not to be included in 'REVISION'

- **Ambient Air Quality Conditions:** Not neighborhood-based, tracked by air districts
- **Highway System Performance:** Not neighborhood-based, tracked by Caltrans & regional travel model

# Planned Metrics: Social/Accessibility

- **Non-motorized Accessibility Index**
  - Neighborhood-level access to amenities
  - Think ‘Walkscore.com’ plus
- **Regional Efficiency Index**
  - Location within the region
  - Transit & driving accessibility to jobs & other trip attractors
- **Housing + Transportation Affordability Index**
  - HTA from Center for Neighborhood Technology or similar

# Planned Metrics: Economics

- **Housing Market Performance Indicator**
  - Use of housing value data from County Assessor, Zillow, or other sources to assess housing affordability trends
- **Employment Performance Indicator**
  - Neighborhood-level changes in employment from US Census Bureau
- **Identification of Infill Opportunities**
  - Continuation of existing CALOTS functionality

# Performance Metrics: Parameters

- **Neighborhood-based**
  - Census tract or block group geography
- **Regularly updated**
  - Able to track performance over time
- **Sustainability related**
  - Social/Environmental/Economic
- **‘Open’**
  - Can build upon to facilitate further analysis
  - Licensing terms allow use on public website

# Example Data Sets

- **US Census Bureau data:**
  - American Community Survey
  - Longitudinal Employer-Household Dynamics  
Local Employment Dynamics
- **Home Mortgage Disclosure Act**
- **Neighborhood Stabilization Program**
- **Zillow/Walkscore.com/Yelp & other 3<sup>rd</sup> party sources with public data available via API**

# Open Discussion About Performance Metrics & Functionality

## Environmental

- GHG emissions
- Air quality

## Economic

- Jobs
- Neighborhood-level Incomes

## Social

- Affordability
- Displacement



# Next Steps

- **UCLA research staff will review options for newly proposed performance metrics**
- **We'll reconvene in 4 to 6 weeks to report back**

# Contact Information

Project website: [lewis.ucla.edu/project/performance-monitoring-tools-to-assess-sustainable-communities-strategies/](https://lewis.ucla.edu/project/performance-monitoring-tools-to-assess-sustainable-communities-strategies/)

SCAG Project Manager:

Ping Chang ([chang@scag.ca.gov](mailto:chang@scag.ca.gov))

UCLA Project Manager

Juan Matute ([jmatute@ucla.edu](mailto:jmatute@ucla.edu))

Project Staff:

Madeline Brozen ([mbrozen@publicaffairs.ucla.edu](mailto:mbrozen@publicaffairs.ucla.edu))

Herbie Huff ([herbiehuff@luskin.ucla.edu](mailto:herbiehuff@luskin.ucla.edu))

Norman Wong ([wongn@luskin.ucla.edu](mailto:wongn@luskin.ucla.edu))